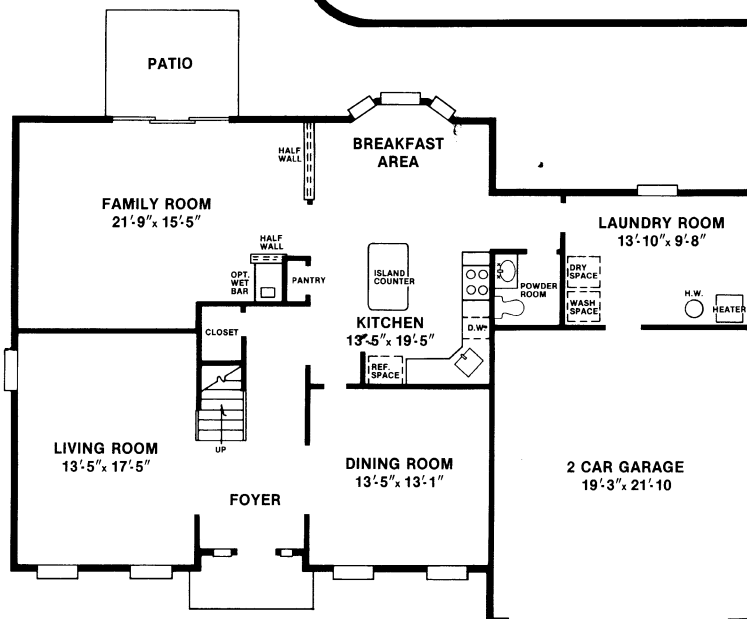


Artist's conception.

The Barclay

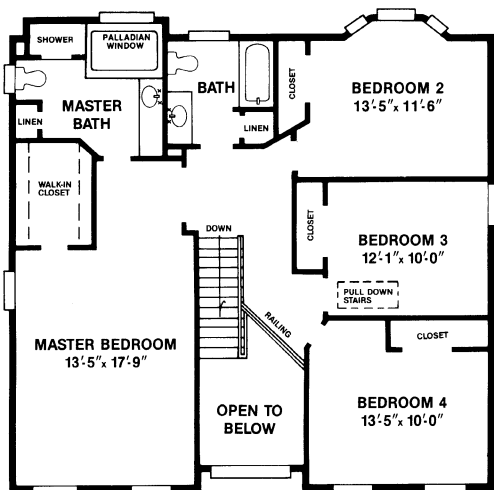


**4 bedrooms, 2½ baths,
family room, 2 car garage**

The Barclay combines traditional refinement and upscale design touches, such as special windows, to create a home that is both impressive and comfortable. The first floor is designed to lend itself easily to both entertaining and family gatherings. Defined, formal living and dining rooms flank the 2-story foyer, and a large family room with a wet bar option opens to an outdoor patio. A half wall leads to a comfortable, efficient kitchen with a center island and a sunny breakfast nook with a triple bay window. The second floor is accented by a stunning master suite with a private bath that features a garden tub with a Palladian window above. Three more oversized bedrooms and a second bath with a linen closet add space for privacy and activity in this family home with a luxurious touch.

All dimensions subject to field variation.

Living Space	2,600 sq. ft.
Garage	430 sq. ft.
Total	3,030 sq. ft.



by **Sam Paparone**