



Bellingham

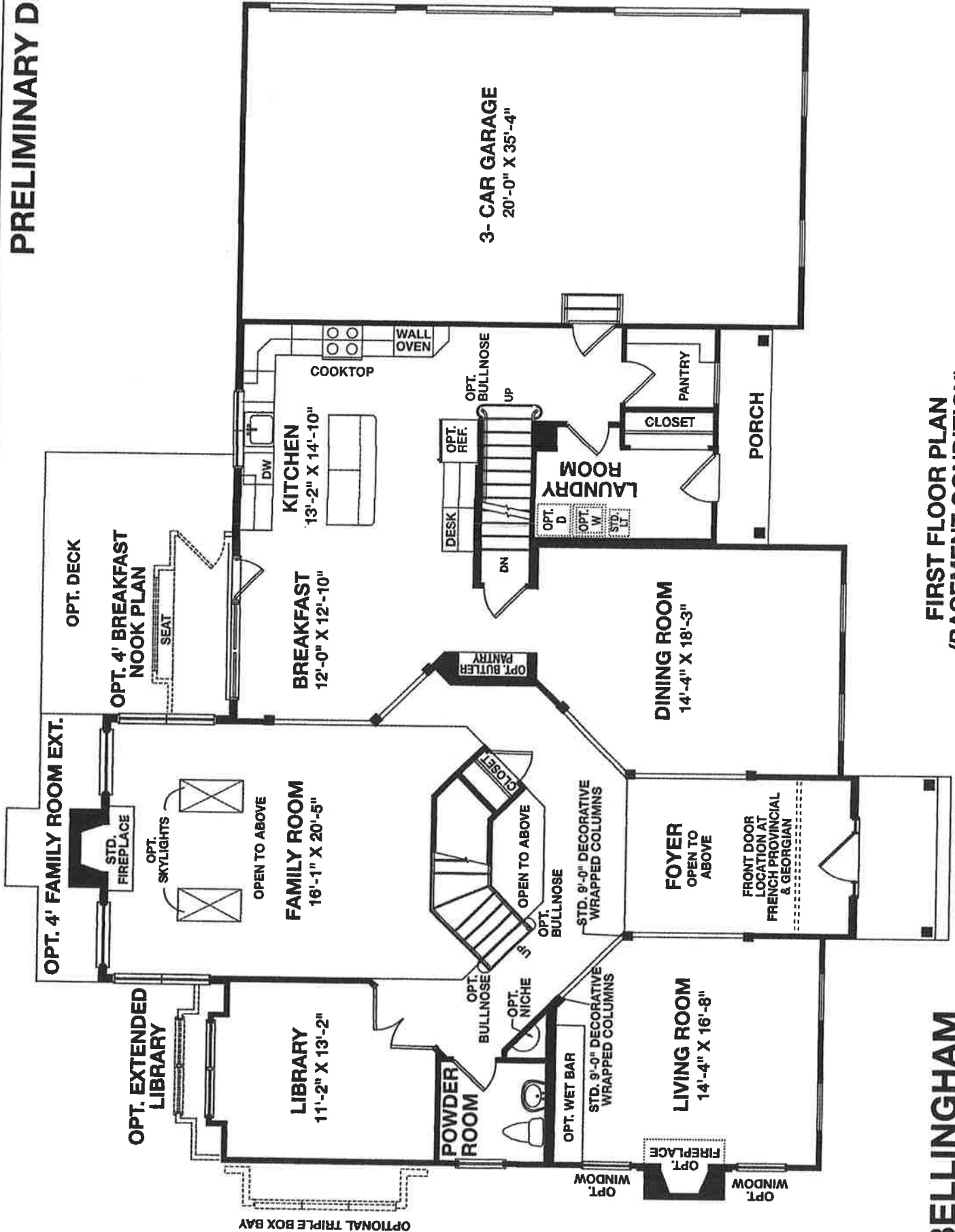
PRELIMINARY
DRAFT



Georgian B Elevation

All exterior elevations shown are artist's renderings and subject to change. Room sizes and window configurations may vary per elevation. Elevations may illustrate optional windows, dormers and/or other optional features. See sales consultant for specific facade details including siding, stone, and brick. Optional flared Stairs.

PRELIMINARY DRAFT

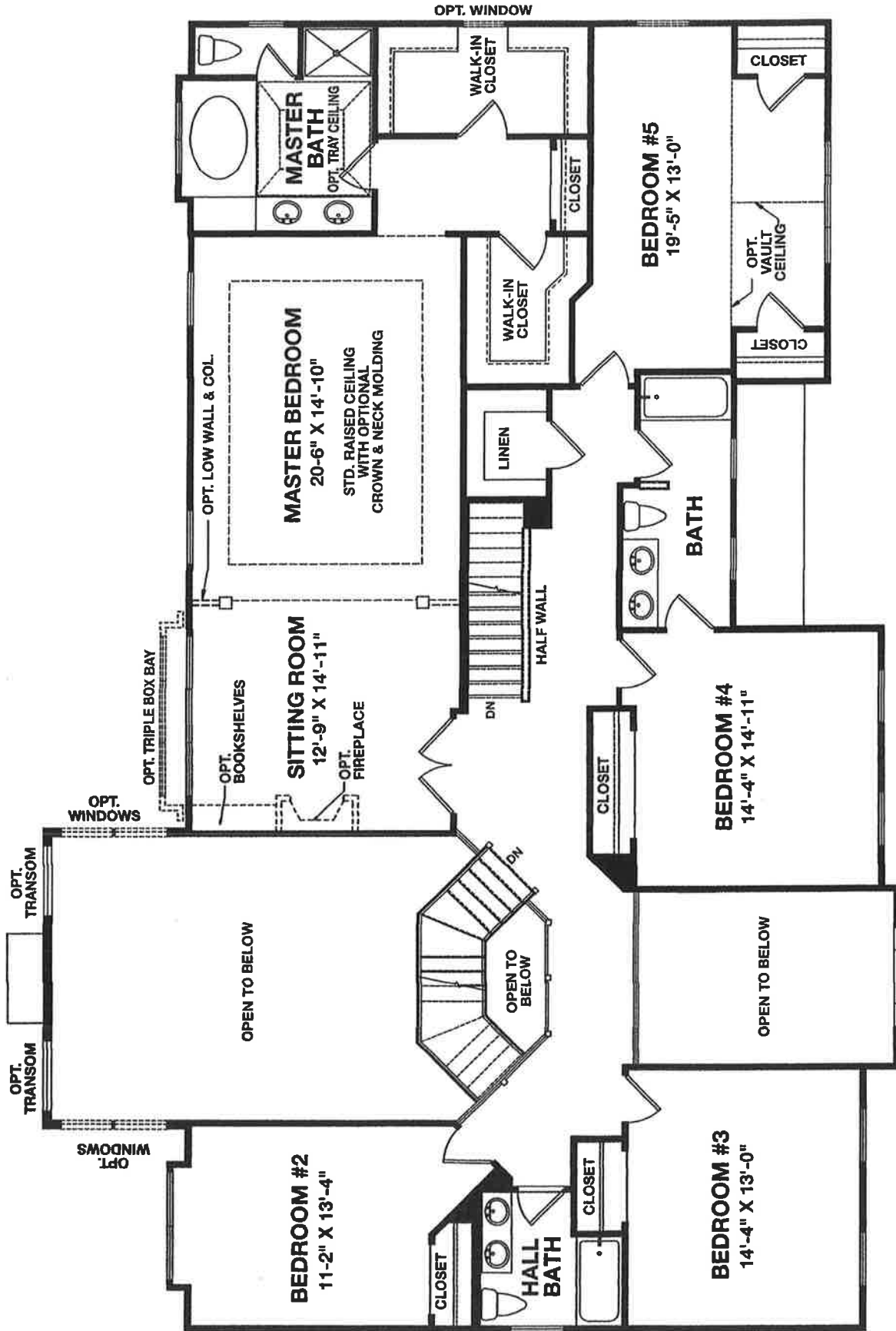


**FIRST FLOOR PLAN
(BASEMENT CONDITION)**

BELLINGHAM

*** FLOOR PLANS ARE SUBJECT TO CHANGE AND ARE FOR ILLUSTRATIVE PURPOSES ONLY.
1400. (A-2b 1st Flr/Pln - bsmt 1) BASEMENT CONDITION 09.22.04

PRELIMINARY DRAFT

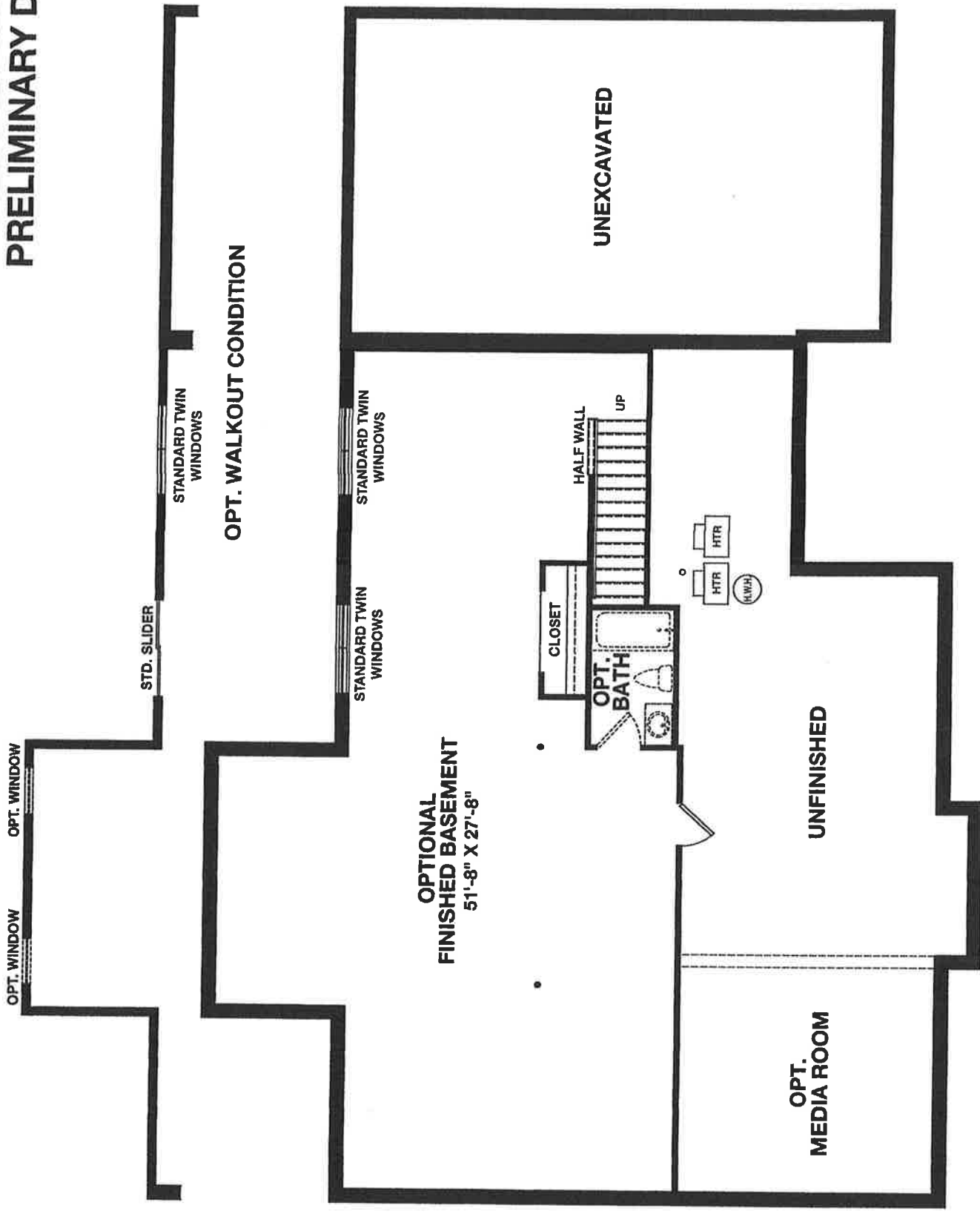


**SECOND FLOOR PLAN
(BASEMENT CONDITION)**

BELLINGHAM

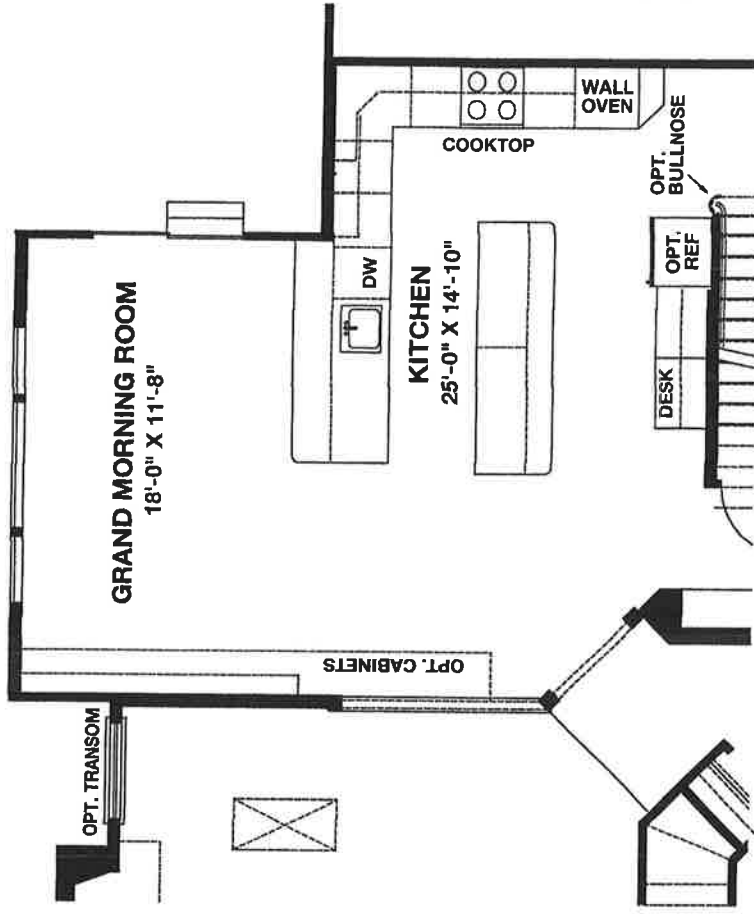
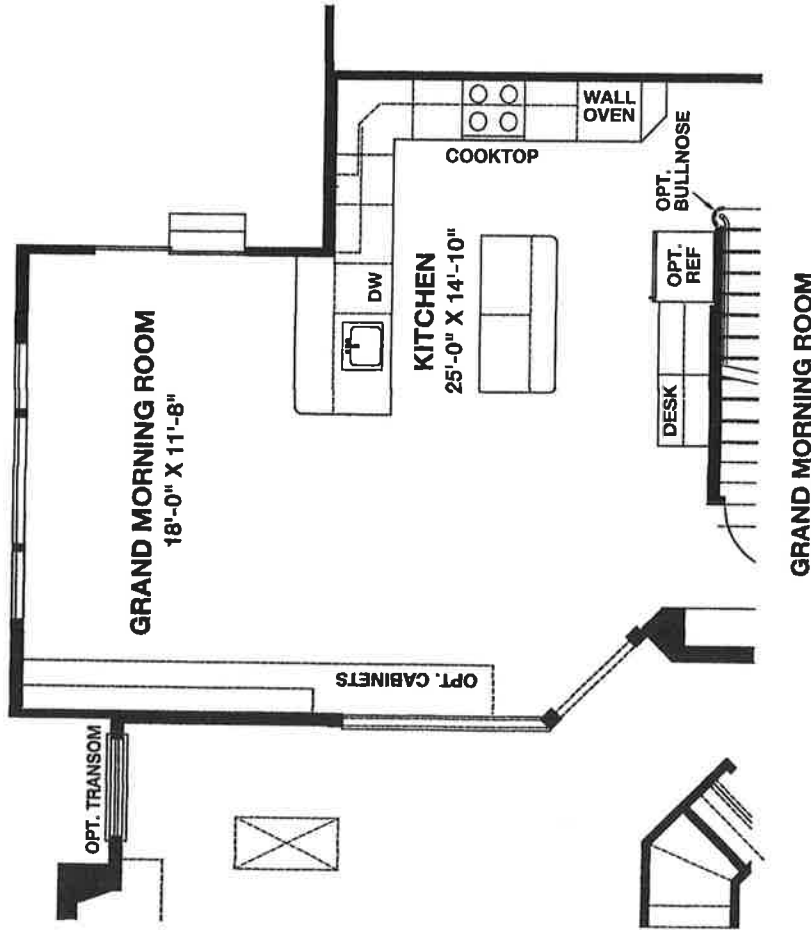
*** FLOOR PLANS ARE SUBJECT TO CHANGE AND ARE FOR ILLUSTRATIVE PURPOSES ONLY.
1404. (A-3b 2nd FlrPln 1) BASEMENT CONDITION 11.8.04

PRELIMINARY DRAFT



THE BELLINGHAM MODEL **OPTIONAL FINISHED BASEMENT PLAN**
*** FLOOR PLANS ARE SUBJECT TO CHANGE AND ARE FOR ILLUSTRATIVE PURPOSES ONLY.
(A-1B) 09.22.04

PRELIMINARY DRAFT



BELLINGHAM

OPTIONAL GRAND MORNING ROOM LAYOUTS

*** FLOOR PLANS ARE SUBJECT TO CHANGE AND ARE FOR ILLUSTRATIVE PURPOSES ONLY.
1409. (NEW-GM1-19FT 1) BASEMENT CONDITION 07.01.03

PRELIMINARY DRAFT

OMIT
OPT. BOX BAY

CONSERVATORY
15'-6" X 23'-5"

OPT. 2-SIDED
FIREPLACE

PARTIAL FIRST FLOOR PLAN
24'-0" CONSERVATORY

CONSERVATORY
15'-6" X 29'-5"

OPT. 2-SIDED
FIREPLACE

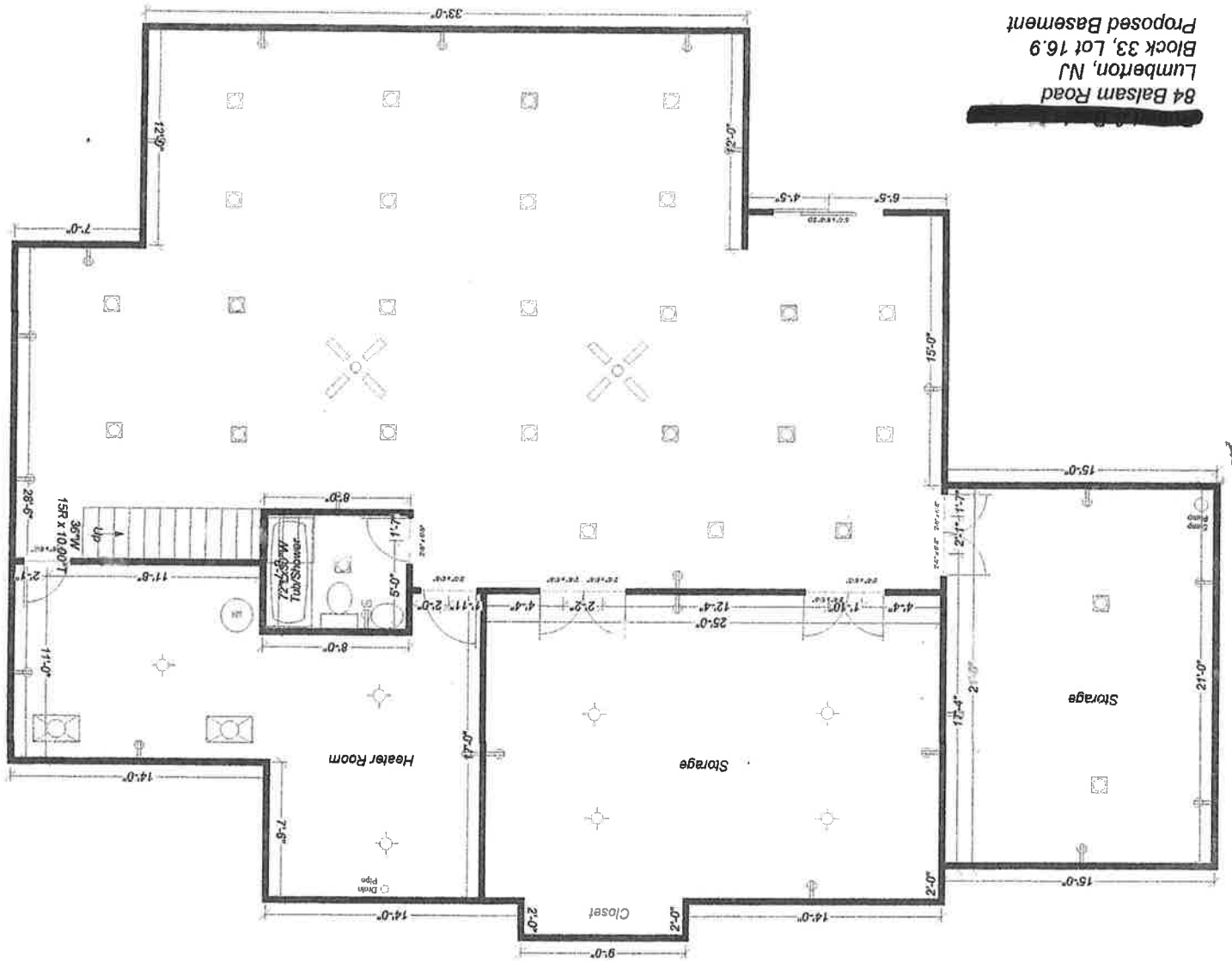
PARTIAL FIRST FLOOR PLAN
30'-0" CONSERVATORY

BELLINGHAM

OPTIONAL CONSERVATORY LAYOUTS

*** FLOOR PLANS ARE SUBJECT TO CHANGE AND ARE FOR ILLUSTRATIVE PURPOSES ONLY.
1403. (A-2n conserv 1) BASEMENT CONDITION 07.01.03

84 Balsam Road
Lumberton, NJ
Block 33, Lot 16.9
Proposed Basement

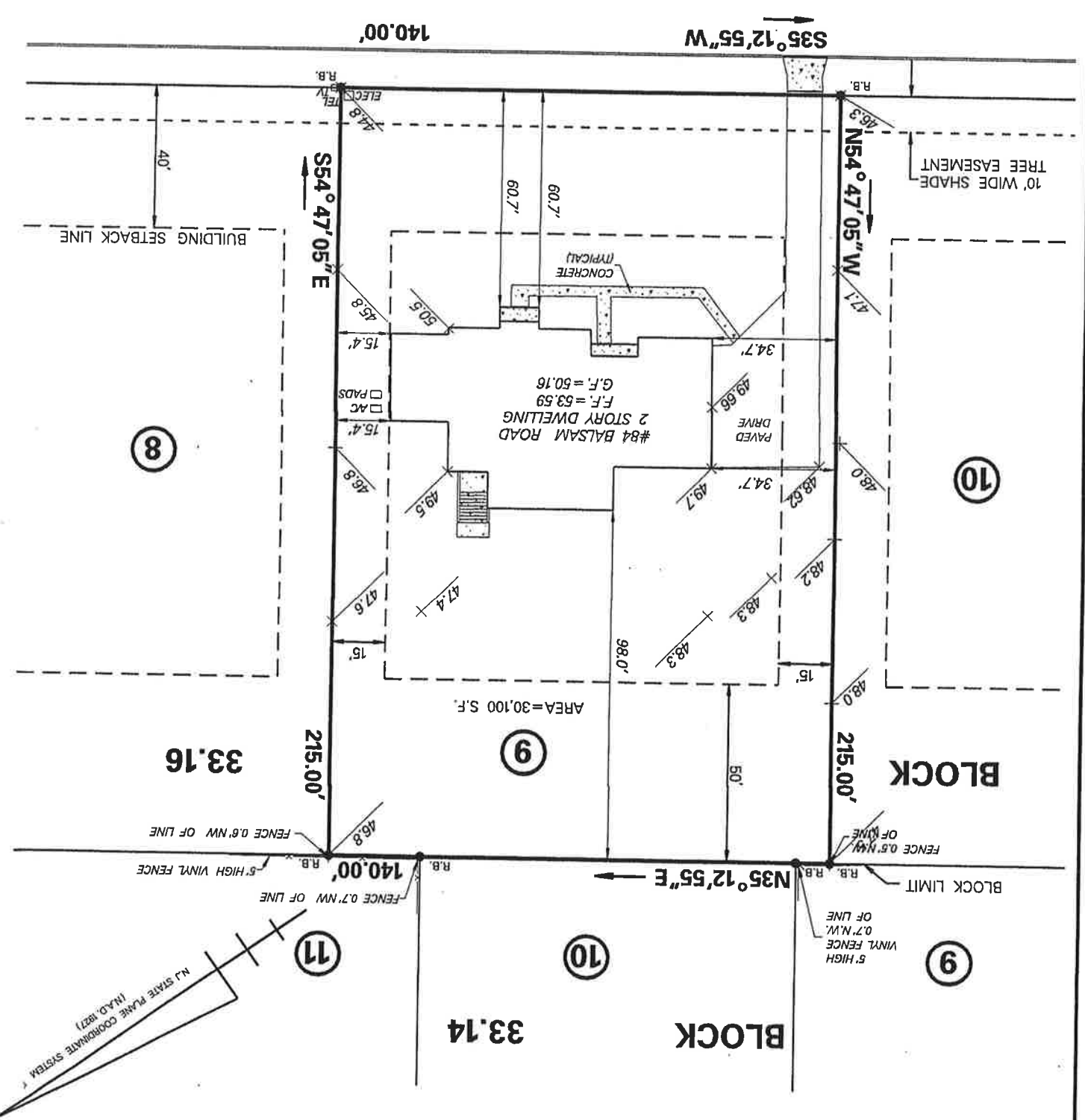


DEED DESCRIPTION:
 BEING KNOWN AND DESIGNATED AS LOT 9
 BLOCK 33.16 SECTION 12-A AS SHOWN AND
 SET FORTH ON A CERTAIN MAP ENTITLED
 "SUBDIVISION PLAN FOR JONES FARM
 WISEMAN & TAYLOR, DATED MARCH, 2002,
 REVISID TO 5-15-03, AND FILED IN THE
 BURLINGTON COUNTY CLERK'S OFFICE
 ON 4/29/04 AS MAP NO. 3999167.
 NOTE:
 1. THIS SURVEY WAS PREPARED WITHOUT THE
 BENEFIT OF TITLE REPORT.
 2. BUILDING TIES ARE GIVEN TO THE FOUNDATION.

REV. 3-04-05: (FINAL & LOT 5/0)
 REV. 9-15-04: (FOUNDATION LOCATION)
 REV. 9-05-04: (ADDED 5th BEDROOM OPT.)

LEGEND:
 ● R.B. DENOTES REBAR ON PROPERTY CORNER

BALSAM ROAD (50.00 FEET WIDE)



N.J. STATE PLANE COORDINATE SYSTEM
 (M.A.D. 1927)