

Federalist Elevation



All exterior elevations shown are artist's renderings and subject to change. Window sizes, styles, and locations may vary. Elevations may illustrate optional windows, dormers and/or other optional features. See sales consultant for specific facade details including siding, stone, stucco, and brick.

All exterior elevations shown are artist's renderings and subject to change. Window sizes, styles, and locations may vary. Elevations may illustrate optional windows, dormers and/or other optional features. See sales consultant for specific facade details including siding, stone, stucco, and brick.



Classical Elevation

Traditional Elevation



All exterior elevations shown are artist's renderings and subject to change. Window sizes, styles, and locations may vary. Elevations may illustrate optional windows, dormers and/or other optional features. See sales consultant for specific facade details including siding, stone, stucco, and brick.

All exterior elevations shown are artist's renderings and subject to change. Window sizes, styles, and locations may vary. Elevations may illustrate optional windows, dormers and/or other optional features. See sales consultant for specific facade details including siding, stone, stucco, and brick. Shown with optional box bay window and brick wainscoting.



Chateau Elevation

The Brinton Grand Manor Elevation



All exterior elevations shown are artist's renderings and subject to change. Window sizes, styles, and locations may vary. Elevations may illustrate optional windows, dormers and/or other optional features. See sales consultant for specific facade details including siding, stone, stucco, and brick.

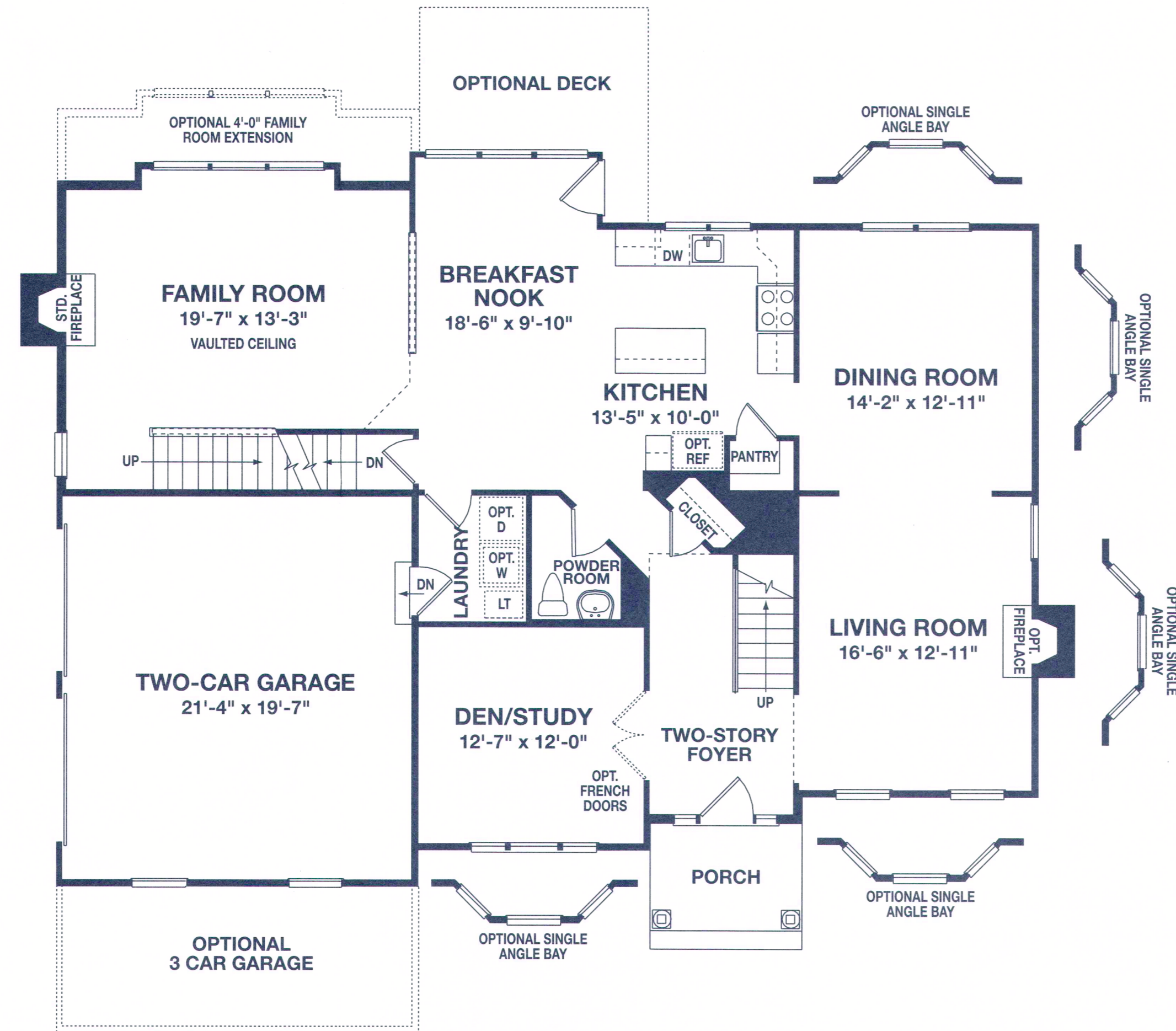
COVENTRY & GLEN

ORLEANS
HOMEBUILDERS
Building Trust Since 1918.

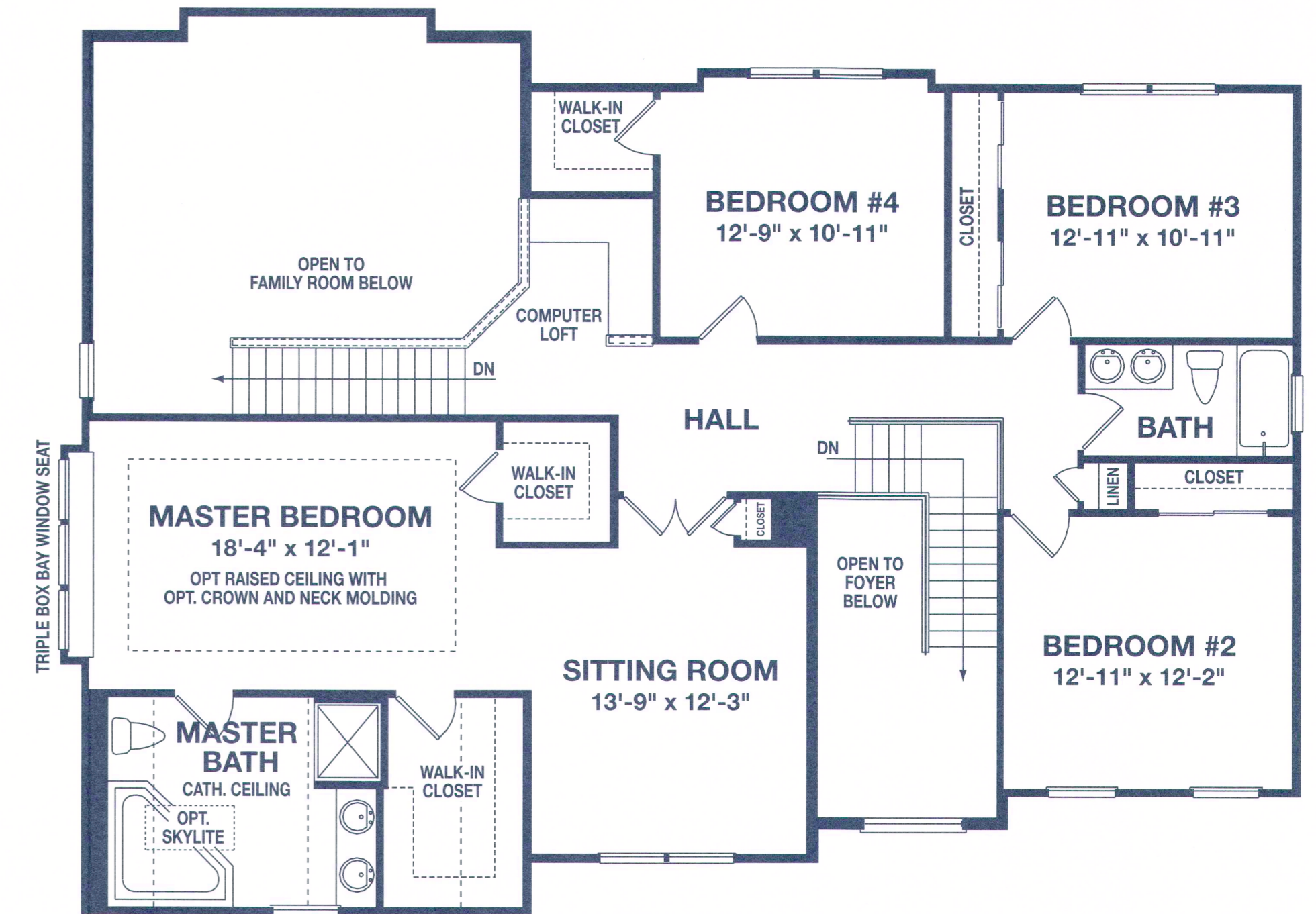
The Brinton Grand

Introducing the Brinton Grand,
a home as individual as you are!

- 4 bedrooms, 2-1/2 baths
- 9' first floor ceilings
- Elegant two-story entry foyer
- Spacious dining room and living room
- Oversized two-story family room with sunny box window
- Den/study with optional bay window
- Modern kitchen offering extensive counter space and spacious cabinetry, a center island work-station, walk-in pantry, and a breakfast area
- Two convenient staircases
- Impressive master bedroom with window seat, two walk-in closets, and private master bath including separate tub and shower and dual vanities
- Standard two-car garage with an option for a three-car garage



First Floor



Second Floor

Floor plans and dimensions are approximate and subject to change without notice. Floor plans may illustrate optional features. Window locations and styles vary according to elevation. Please see sales consultant for basement detail. (Where basements are optional, see sales consultant for alternate first floor plan.)

