

## Manor Elevation



All exterior elevations shown are artist's renderings and subject to change. Window sizes, styles, and locations may vary. Elevations may illustrate optional windows, dormers and/or other optional features. See sales consultant for specific facade details including siding, stone, stucco, and brick. Shown with optional copper roof.



All exterior elevations shown are artist's renderings and subject to change. Window sizes, styles, and locations may vary. Elevations may illustrate optional windows, dormers and/or other optional features. See sales consultant for specific facade details including siding, stone, stucco, and brick. Shown with optional copper roof.

## Traditional Elevation

## Farmhouse Elevation



All exterior elevations shown are artist's renderings and subject to change. Window sizes, styles, and locations may vary. Elevations may illustrate optional windows, dormers and/or other optional features. See sales consultant for specific facade details including siding, stone, stucco, and brick.



All exterior elevations shown are artist's renderings and subject to change. Window sizes, styles, and locations may vary. Elevations may illustrate optional windows, dormers and/or other optional features. See sales consultant for specific facade details including siding, stone, stucco, and brick. Shown with optional copper roof.

## Classical Elevation

## The Chandler Federalist Elevation



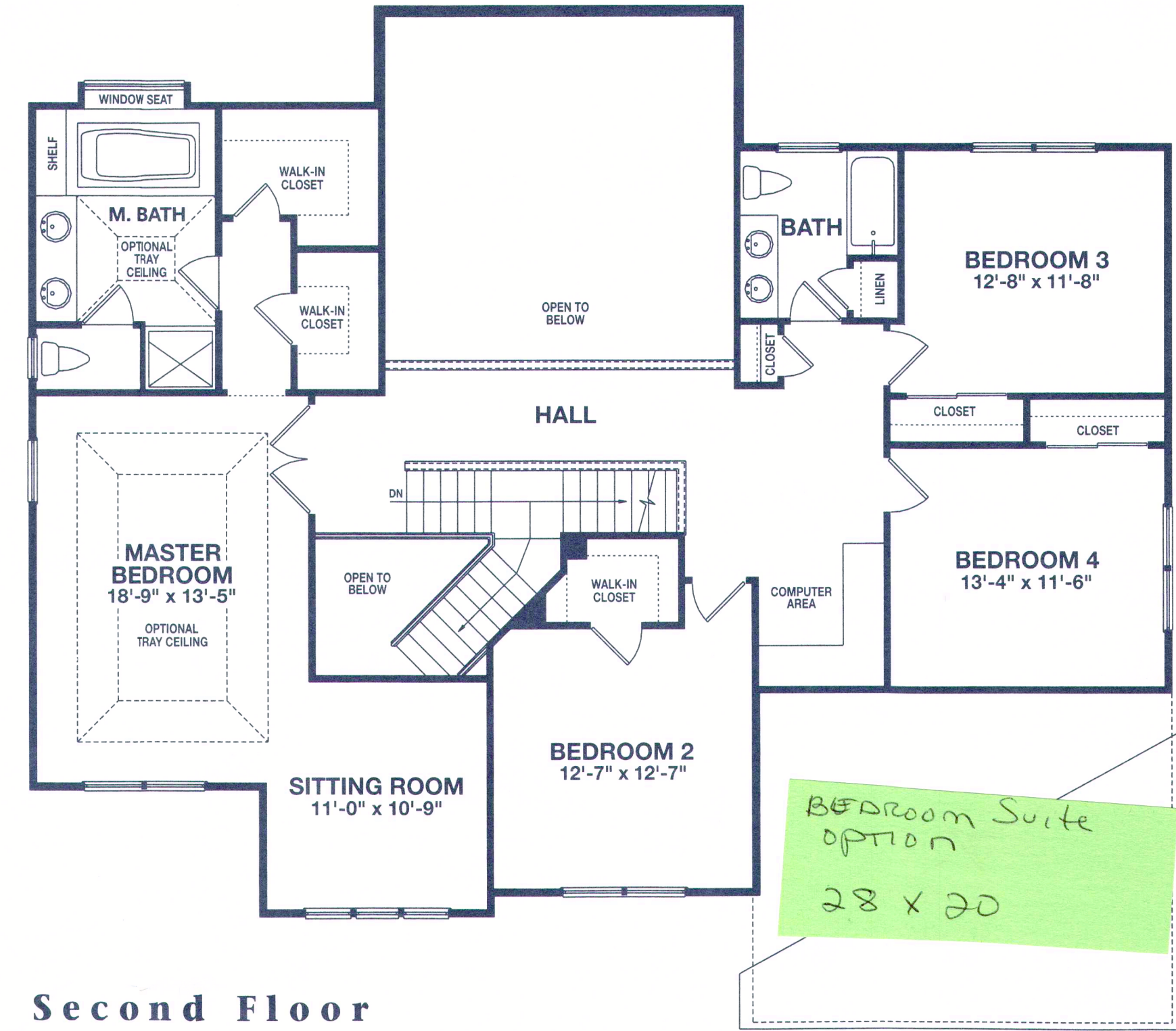
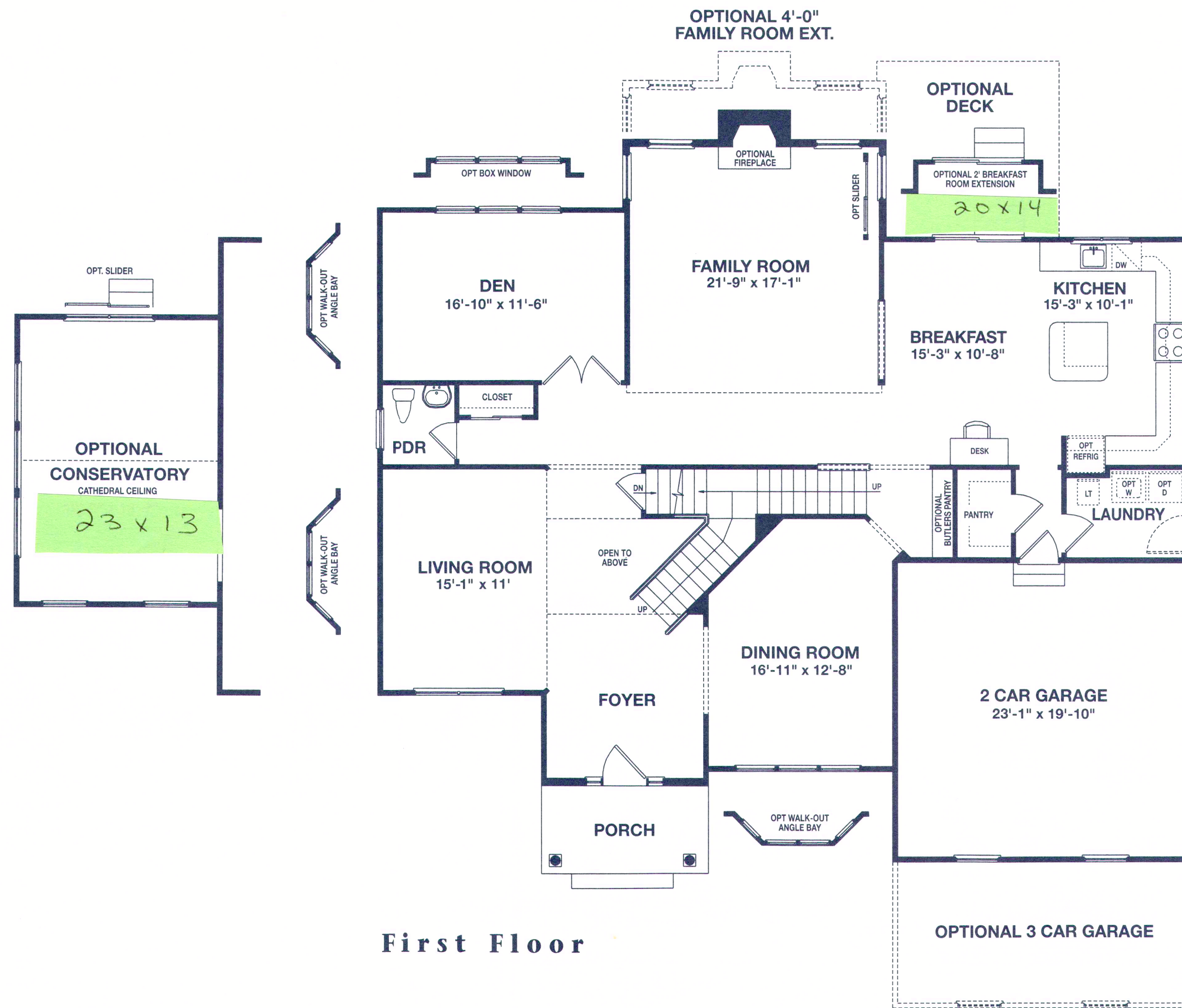
All exterior elevations shown are artist's renderings and subject to change. Window sizes, styles, and locations may vary. Elevations may illustrate optional windows, dormers and/or other optional features. See sales consultant for specific facade details including siding, stone, stucco, and brick. Shown with optional copper roof.



# The Chandler

Today's leading-edge design features for tomorrow's changing lifestyles!

- 4 bedrooms, 2-1/2 baths
- 9' first floor ceilings
- Dramatic angled staircase accessible from foyer and family room
- Spacious living room; sumptuous dining room; secluded den
- Voluminous two-story family room
- Contemporary kitchen featuring extensive counter space, a center island, a convenient desk, and a sunlit breakfast area
- Luxurious master bedroom highlighted by a cozy sitting room, two spacious walk-in closets, and private master bath including separate tub and shower and dual vanities
- Standard two-car garage with an option for a side entry three-car garage



Floor plans and dimensions are approximate and subject to change without notice. Floor plans may illustrate optional features. Window locations and styles vary according to elevation. Please see sales consultant for basement detail. (Where basements are optional, see sales consultant for alternate first floor plan.)

