

Georgian Elevation

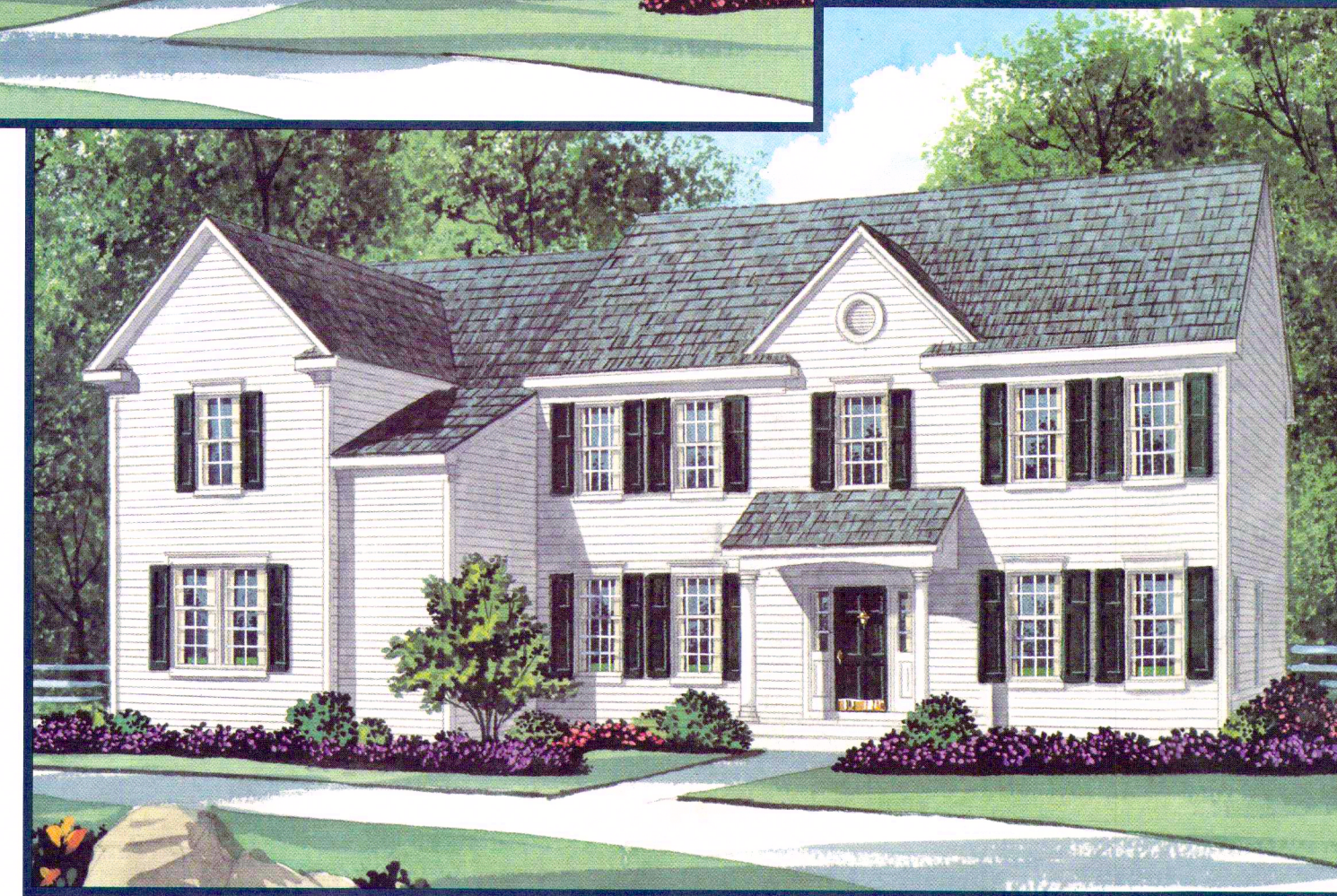


All exterior elevations shown are artist's renderings and subject to change. Window sizes, styles, and locations may vary. Elevations may illustrate optional windows, dormers and/or other optional features. See sales consultant for specific facade details including siding, stone, stucco, and brick.

Country Manor Elevation



All exterior elevations shown are artist's renderings and subject to change. Window sizes, styles, and locations may vary. Elevations may illustrate optional windows, dormers and/or other optional features. See sales consultant for specific facade details including siding, stone, stucco, and brick.



All exterior elevations shown are artist's renderings and subject to change. Window sizes, styles, and locations may vary. Elevations may illustrate optional windows, dormers and/or other optional features. See sales consultant for specific facade details including siding, stone, stucco, and brick.

Traditional Elevation

The Preston Grand II Classical Elevation



All exterior elevations shown are artist's renderings and subject to change. Window sizes, styles, and locations may vary. Elevations may illustrate optional windows, dormers and/or other optional features. See sales consultant for specific facade details including siding, stone, stucco, and brick.

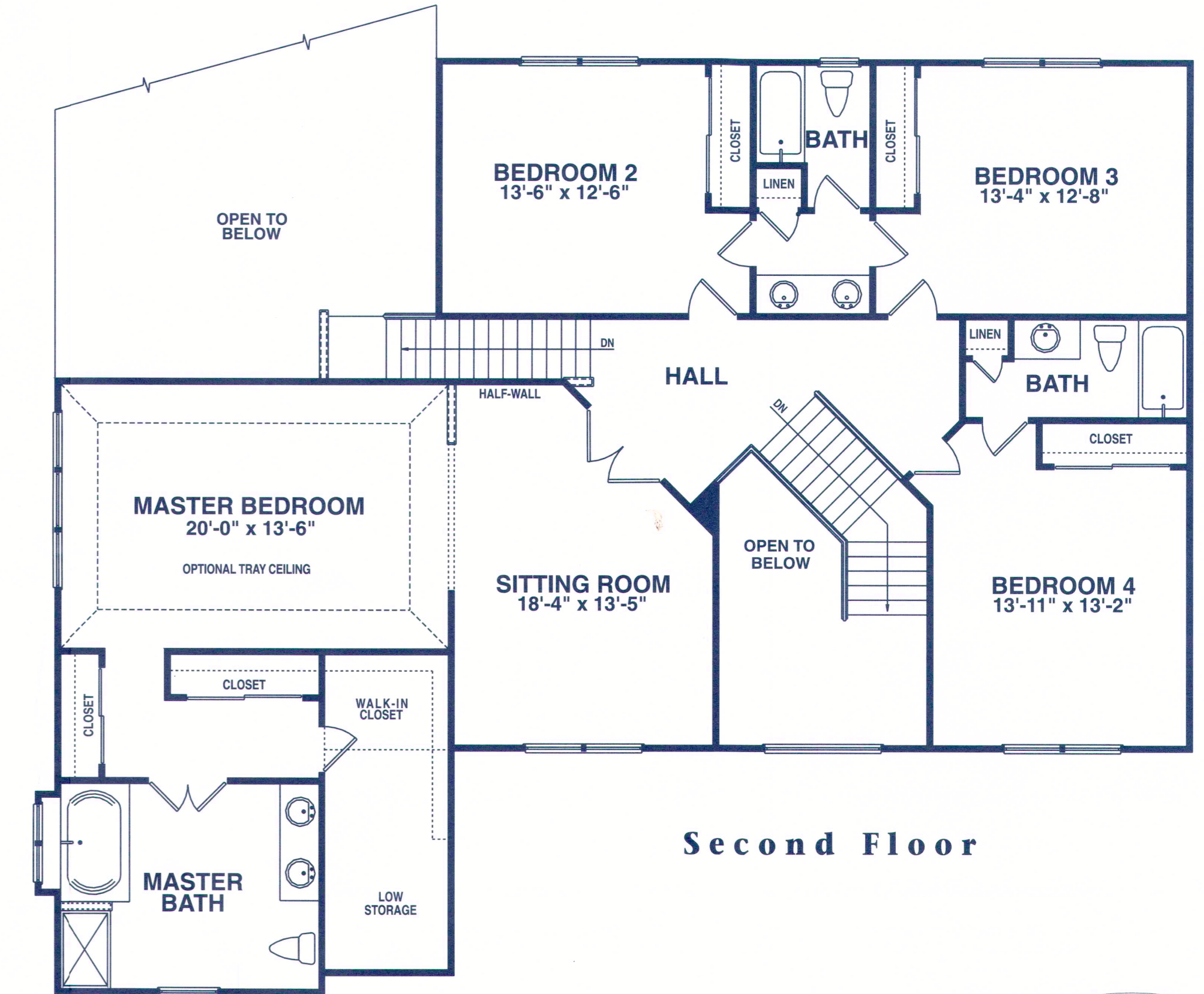
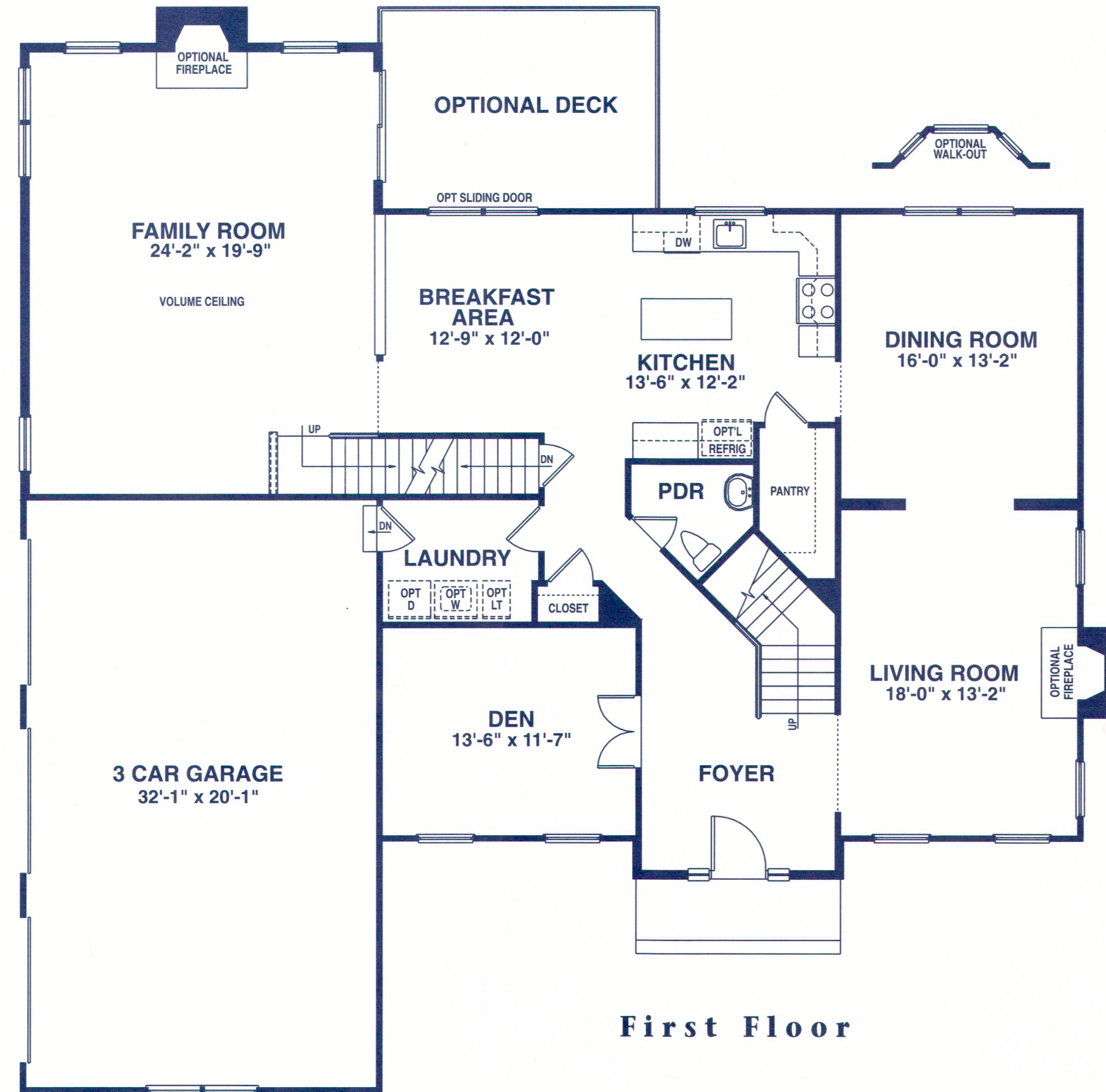
COVENTRY & GLEN



The Preston Grand II

A luxurious home of elegant design...

- 4 bedrooms, 3-1/2 baths
- Two-story foyer with angled staircase
- Rear staircase
- First floor den
- Two-story family room with optional fireplace
- Centrally located kitchen with center island, breakfast area, and walk-in pantry
- Spacious master bedroom featuring enormous walk-in closet, sitting room, and master bath with separate tub and shower and dual vanities
- Three car garage



Floor plans and dimensions are approximate and subject to change without notice. Floor plans may illustrate optional features. Window locations and styles vary according to elevation. Please see sales consultant for basement detail. (Where basements are optional, see sales consultant for alternate first floor plan.)

