

## Farmhouse Elevation



All exterior elevations shown are artist's renderings and subject to change. Window sizes, styles, and locations may vary. Elevations may illustrate optional windows, dormers and/or other optional features. See sales consultant for specific facade details including siding, stone, stucco, and brick. Shown with optional dormers.

All exterior elevations shown are artist's renderings and subject to change. Window sizes, styles, and locations may vary. Elevations may illustrate optional windows, dormers and/or other optional features. See sales consultant for specific facade details including siding, stone, stucco, and brick. Shown with optional dormers and stone.



## Traditional Elevation

## Federalist Elevation



All exterior elevations shown are artist's renderings and subject to change. Window sizes, styles, and locations may vary. Elevations may illustrate optional windows, dormers and/or other optional features. See sales consultant for specific facade details including siding, stone, stucco, and brick. Shown with optional metal roof pent.

All exterior elevations shown are artist's renderings and subject to change. Window sizes, styles, and locations may vary. Elevations may illustrate optional windows, dormers and/or other optional features. See sales consultant for specific facade details including siding, stone, stucco, and brick.



## Classical Elevation

## The Brookfield Manor Elevation



All exterior elevations shown are artist's renderings and subject to change. Window sizes, styles, and locations may vary. Elevations may illustrate optional windows, dormers and/or other optional features. See sales consultant for specific facade details including siding, stone, stucco, and brick. Shown with optional metal roof pent.

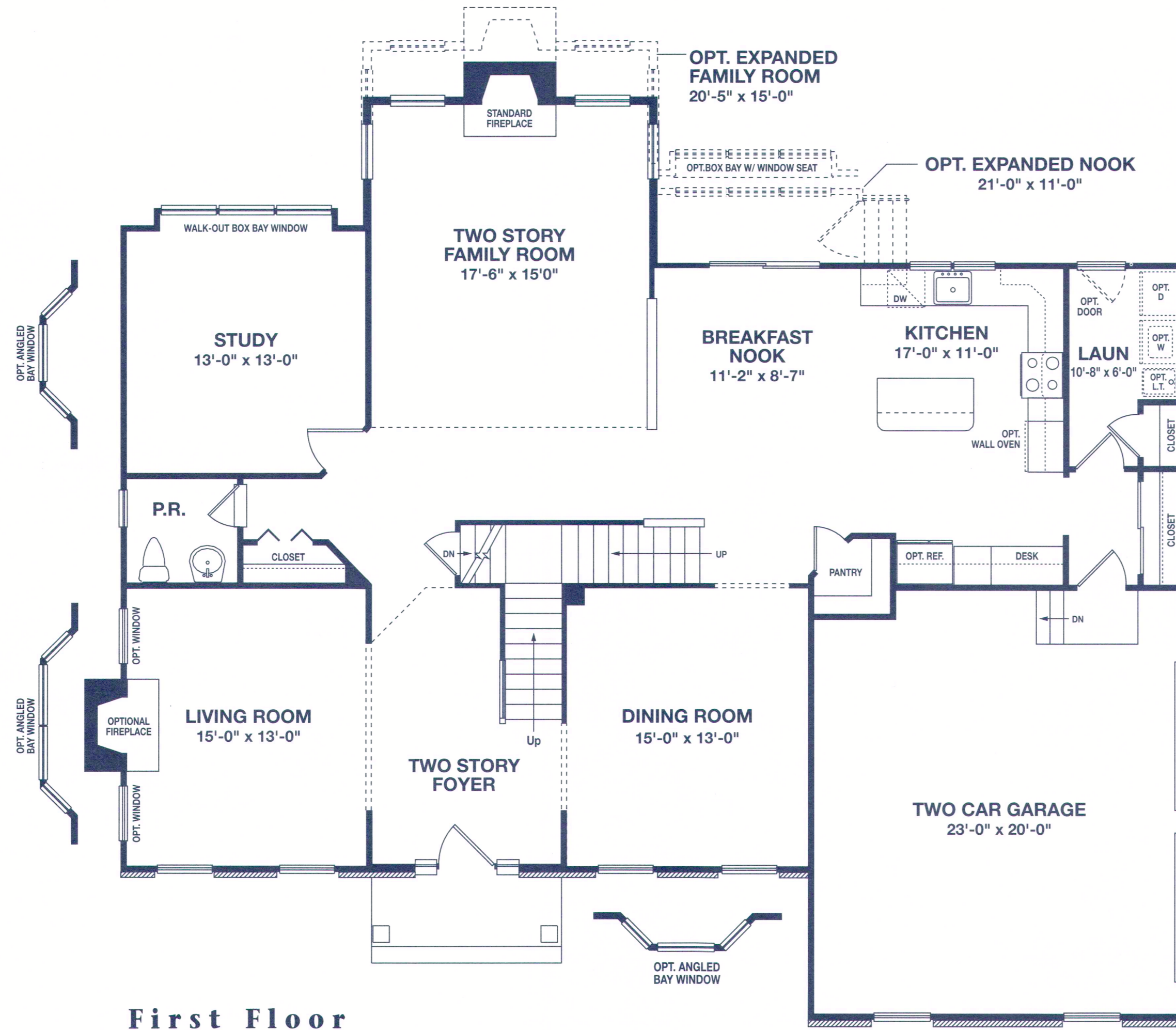
COVENTRY & GLEN

**ORLEANS**  
HOMEBUILDERS  
Building Trust Since 1918.

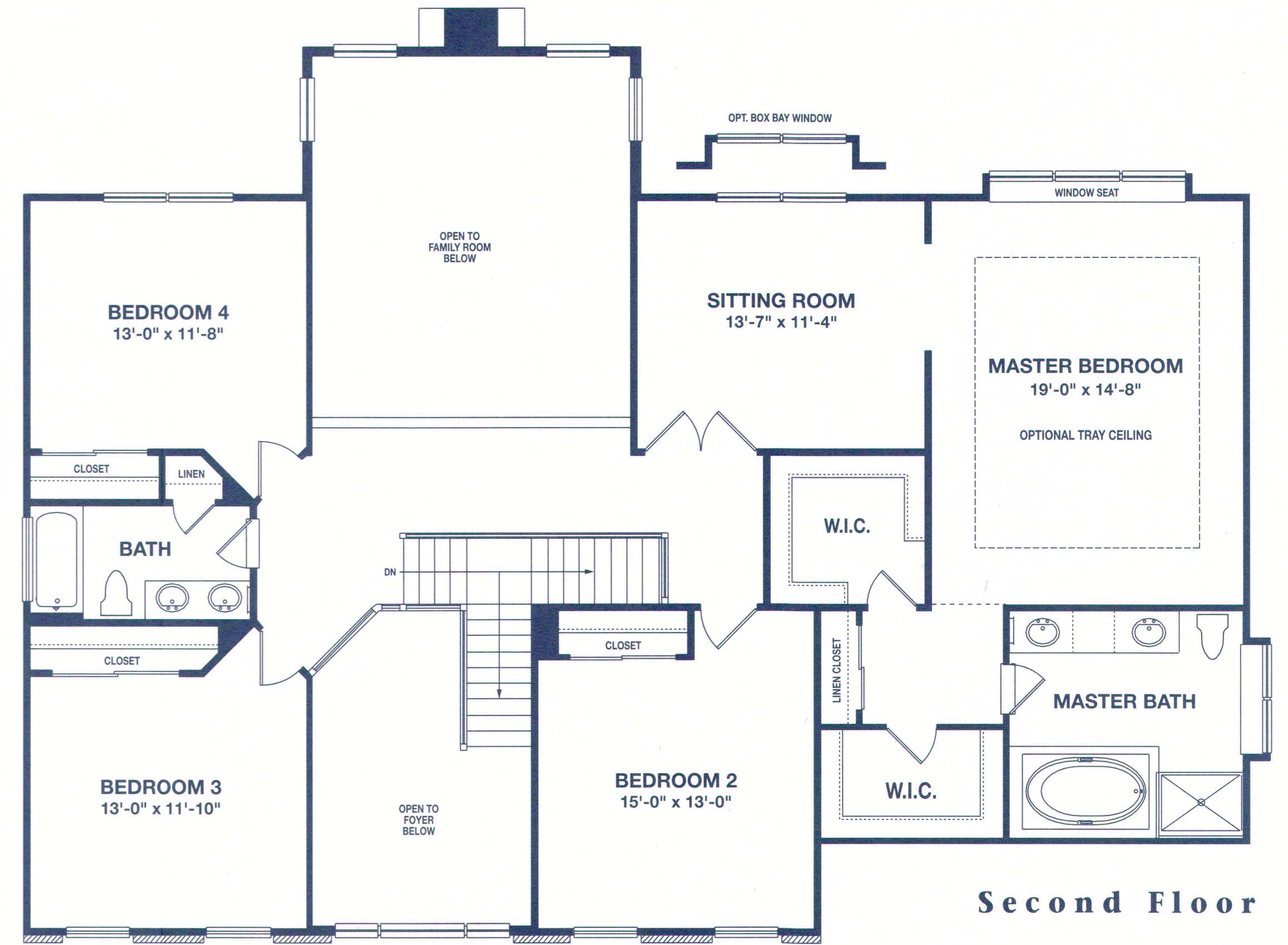
# The Brookfield

When you step into The Brookfield,  
you step into elegance...

- 4 bedrooms, 2-1/2 baths
- Two-story entrance foyer leads into spacious living room and dining room
- Soaring two-story family room with optional fireplace
- Modern kitchen features center island work station, pantry, and sunny breakfast nook with sliding glass doors
- Grand master bedroom suite with charming window seat, two large walk-in closets, attached sitting room, and luxurious master bath with separate tub and shower and dual vanities
- Side entry two-car garage



**First Floor**



**Second Floor**

Floor plans and dimensions are approximate and subject to change without notice. Floor plans may illustrate optional features. Window locations and styles vary according to elevation. Please see sales consultant for basement detail. (Where basements are optional, see sales consultant for alternate first floor plan.)

