

Farmhouse Elevation



All exterior elevations shown are artist's renderings and subject to change. Window sizes, styles, and locations may vary. Elevations may illustrate optional windows, dormers and/or other optional features. See sales consultant for specific facade details including siding, stone, stucco, and brick.

Traditional Elevation



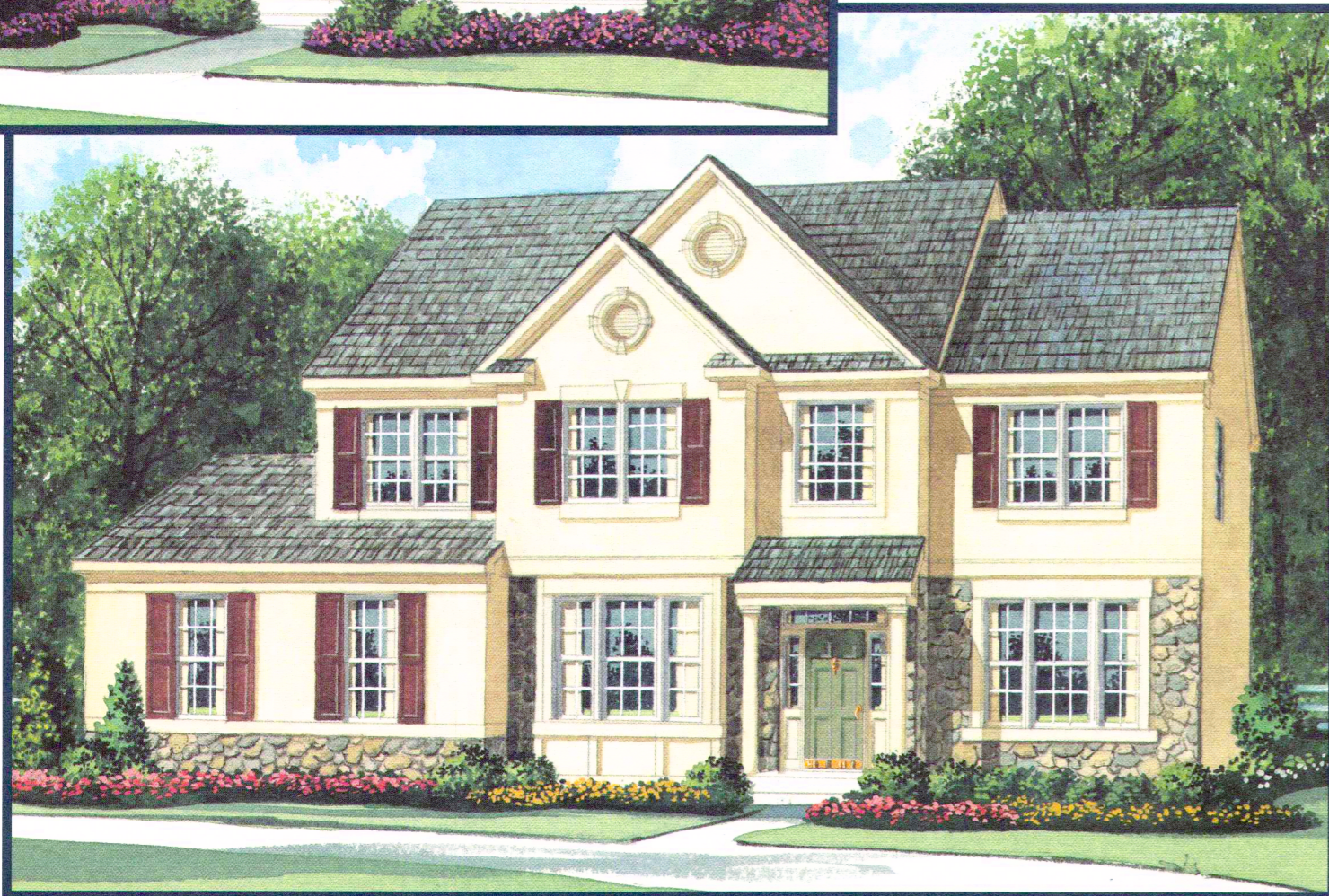
All exterior elevations shown are artist's renderings and subject to change. Window sizes, styles, and locations may vary. Elevations may illustrate optional windows, dormers and/or other optional features. See sales consultant for specific facade details including siding, stone, stucco, and brick.

The Dalton **Federalist Elevation**



All exterior elevations shown are artist's renderings and subject to change. Window sizes, styles, and locations may vary. Elevations may illustrate optional windows, dormers and/or other optional features. See sales consultant for specific facade details including siding, stone, stucco, and brick.

All exterior elevations shown are artist's renderings and subject to change. Window sizes, styles, and locations may vary. Elevations may illustrate optional windows, dormers and/or other optional features. See sales consultant for specific facade details including siding, stone, stucco, and brick.



Classical Elevation

All exterior elevations shown are artist's renderings and subject to change. Window sizes, styles, and locations may vary. Elevations may illustrate optional windows, dormers and/or other optional features. See sales consultant for specific facade details including siding, stone, stucco, and brick.



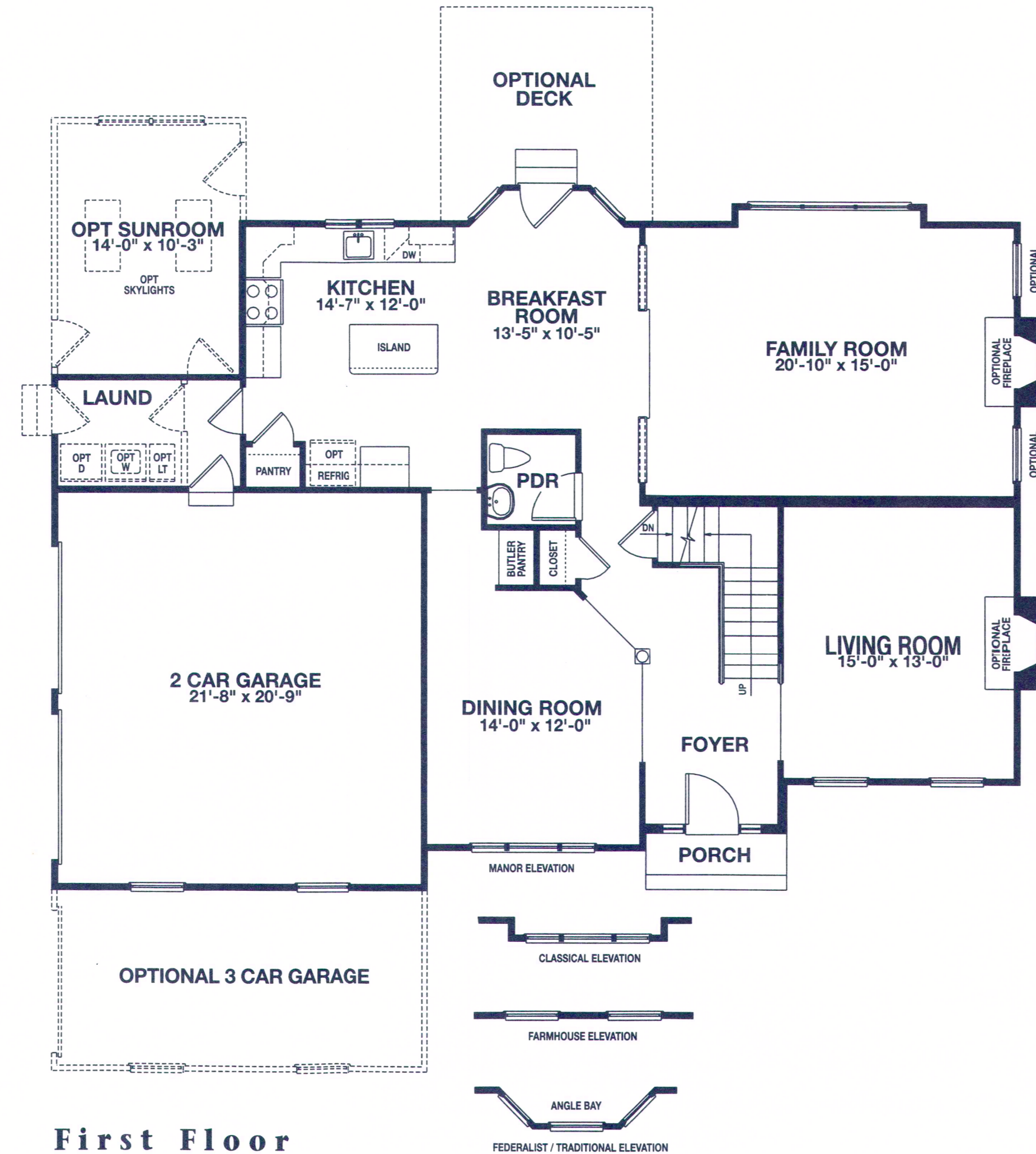
Manor Elevation



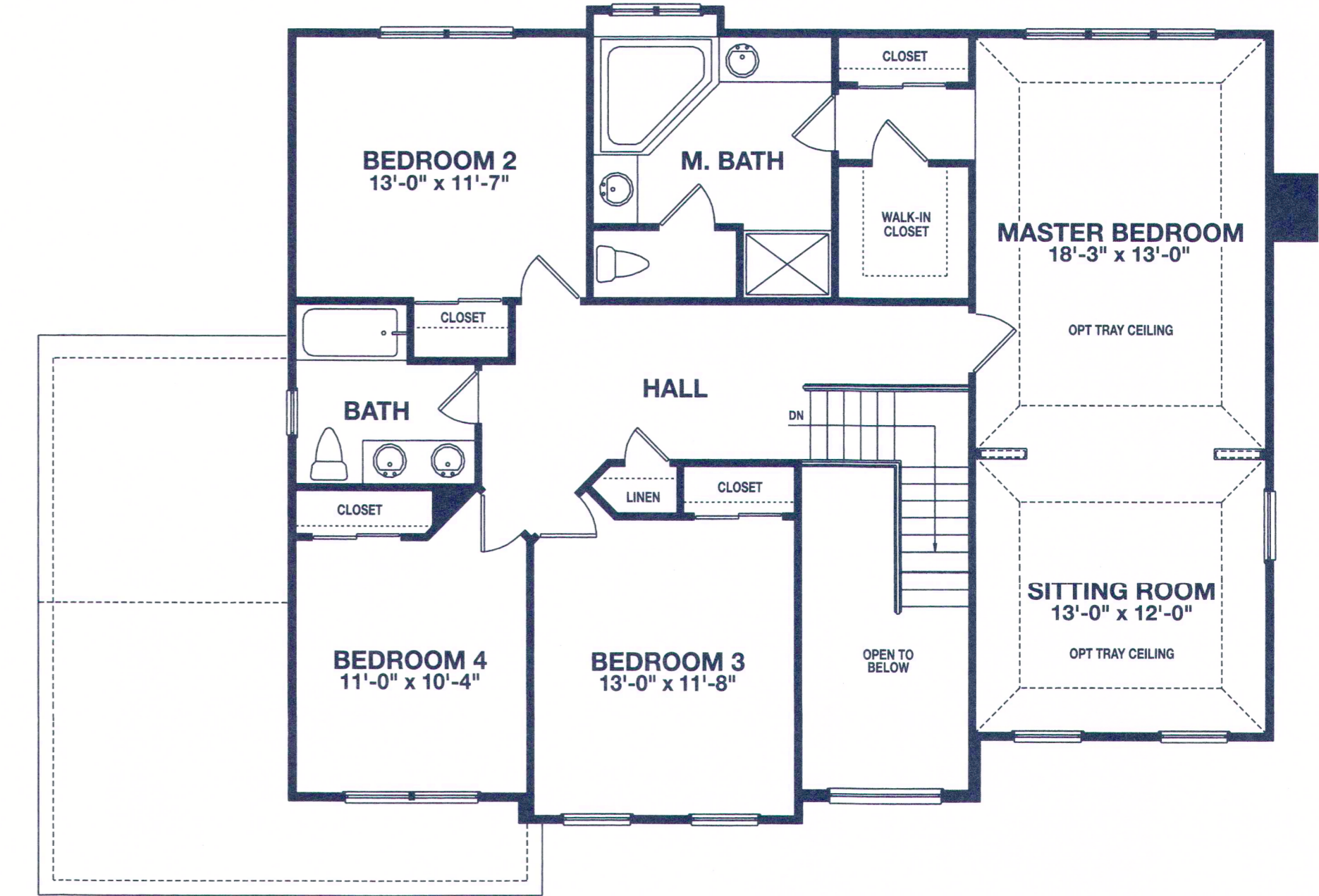
The Dalton

Diverse, innovative design
with spaciousness and choices...

- 4 bedrooms, 2-1/2 baths
- 9' first floor ceilings
- Striking two-story entry foyer with a turned staircase
- Generously-sized family room featuring a large, brilliant box window
- Elegant dining room including exclusive butler's pantry; spacious living room
- Sumptuous, modern kitchen highlighted by extensive counter space, a center island work-station, a roomy pantry, and a radiant breakfast area
- Stately master bedroom offering an optional tray ceiling, spacious walk-in closet, sitting room, and a private master bath including separate tub and shower and dual vanities
- Two-car garage with an option for a three-car garage



First Floor

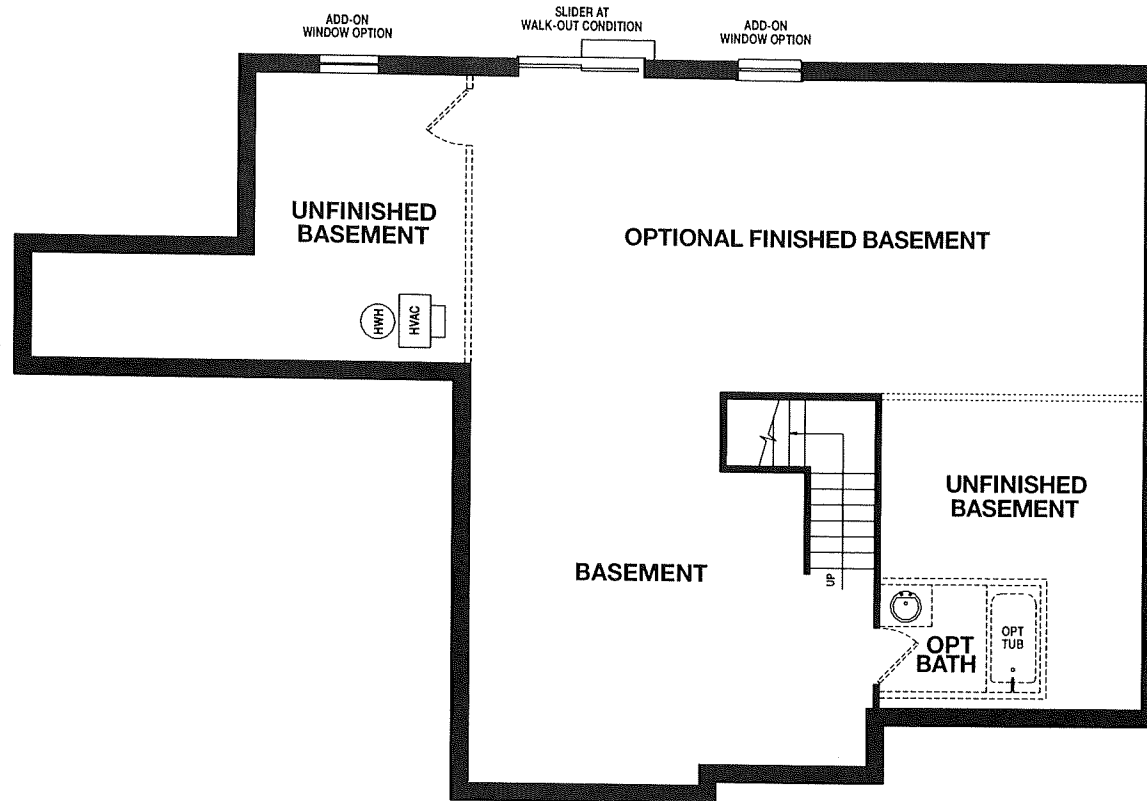


Second Floor

Floor plans and dimensions are approximate and subject to change without notice. Floor plans may illustrate optional features. Window locations and styles vary according to elevation. Please see sales consultant for basement detail. (Where basements are optional, see sales consultant for alternate first floor plan.)



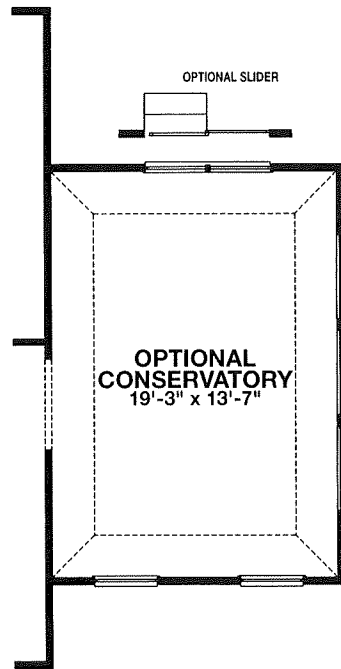
The Dalton - Basement Plan



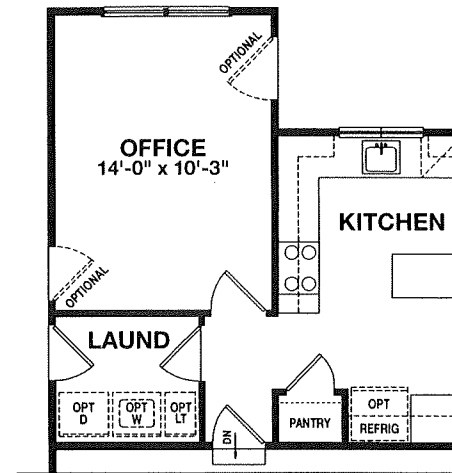
Floor plans and dimensions are approximate and subject to change without notice. Floor plans may illustrate optional features. Window locations and styles vary according to elevation. Please see sales consultant for basement detail. (Where basements are optional, see sales consultant for alternate first floor plan.)



The Dalton - Customizing Options



**OPTIONAL
CONSERVATORY**



**OPTIONAL
OFFICE**

Floor plans and dimensions are approximate and subject to change without notice. Floor plans may illustrate optional features. Window locations and styles vary according to elevation. Please see sales consultant for basement detail. (Where basements are optional, see sales consultant for alternate first floor plan.)

