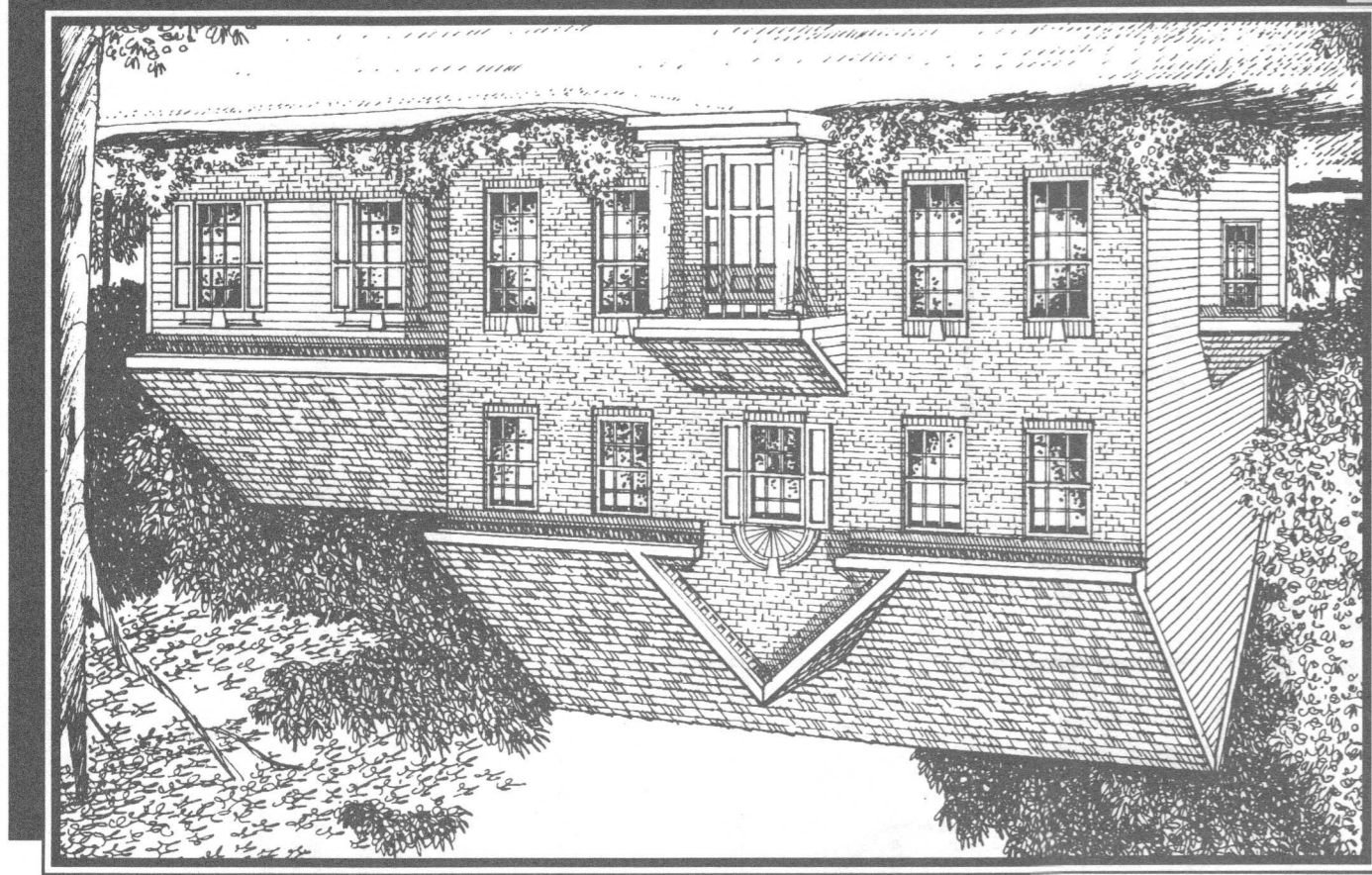


All exterior elevations shown are artist's renderings and subject to change. Window sizes, styles, and locations may vary. Elevations may illustrate optional dormers and/or other optional features. See sales consultant for specific facade details including siding, stone, stucco, and brick. 1/00 #2225



Federalist Elevation

The Wellington

The Wellington

Manor Elevation



All exterior elevations shown are artist's renderings and subject to change. Window sizes, styles, and locations may vary. Elevations may illustrate optional dormers and/or other optional features. See sales consultant for specific facade details including siding, stone, stucco, and brick.

Farmhouse Elevation



All exterior elevations shown are artist's renderings and subject to change. Window sizes, styles, and locations may vary. Elevations may illustrate optional dormers and/or other optional features. See sales consultant for specific facade details including siding, stone, stucco, and brick. Shown with optional stone.

Traditional Elevation

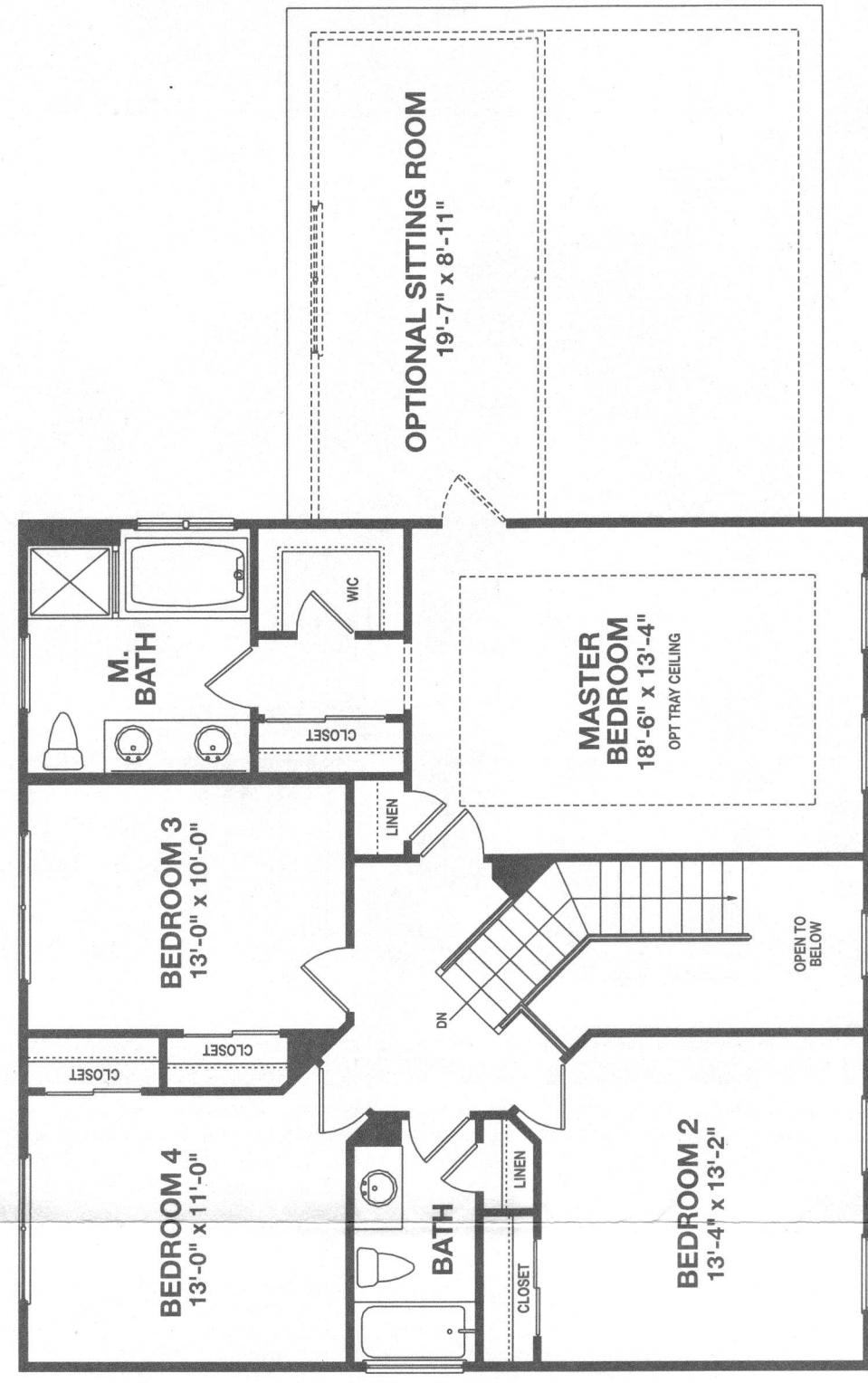


All exterior elevations shown are artist's renderings and subject to change. Window sizes, styles, and locations may vary. Elevations may illustrate optional dormers and/or other optional features. See sales consultant for specific facade details including siding, stone, stucco, and brick.

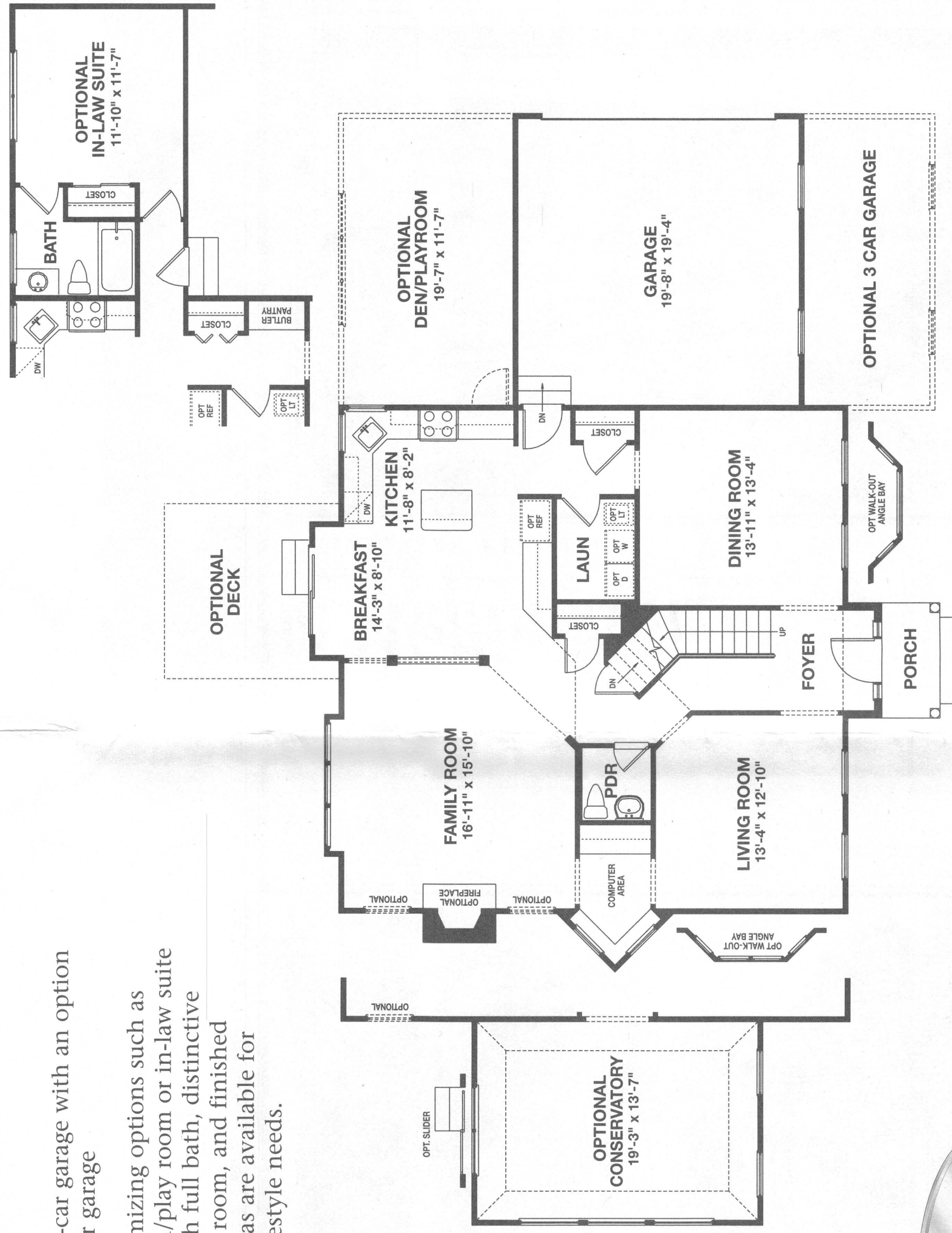
# The Wellington

*Among the many innovative design features of the impressive Wellington...*

- 4 bedrooms, 2-1/2 baths
- 9' First floor ceilings
- Elegant two-story entry foyer with dramatic angled staircase
- Sumptuous dining room; spacious living room connected to the contemporary built-in computer nook
- Immense family room featuring convenient half-wall to adjacent breakfast area, triple window seat, and optional cozy fireplace
- Centrally located, modern kitchen with expansive counter space, center island work-station, a handy desk, a roomy pantry, and a sunlit breakfast area
- Posh master bedroom highlighted by an amply-spaced walk-in closet and traditional closet, private master bath including separate tub and shower and dual vanities, and optional private sitting room
- Included two-car garage with an option for a three-car garage
- Special customizing options such as oversized den/play room or in-law suite complete with full bath, distinctive conservatory room, and finished basement areas are available for individual lifestyle needs.



**SECOND FLOOR**



**FIRST FLOOR**

