

## Traditional Elevation



All exterior elevations shown are artist's renderings and subject to change. Window sizes, styles, and locations may vary. Elevations may illustrate optional windows, dormers and/or other optional features. See sales consultant for specific facade details including siding, stone, stucco, and brick.

## Classical Elevation



All exterior elevations shown are artist's renderings and subject to change. Window sizes, styles, and locations may vary. Elevations may illustrate optional windows, dormers and/or other optional features. See sales consultant for specific facade details including siding, stone, stucco, and brick.

## The Winfield Manor Elevation



All exterior elevations shown are artist's renderings and subject to change. Window sizes, styles, and locations may vary. Elevations may illustrate optional windows, dormers, and/or other optional features. See sales consultant for specific facade details including siding, stone, stucco, and brick. Shown with optional stone.

All exterior elevations shown are artist's renderings and subject to change. Window sizes, styles, and locations may vary. Elevations may illustrate optional windows, dormers and/or other optional features. See sales consultant for specific facade details including siding, stone, stucco, and brick. Shown with optional dormers and stone. Shown with optional dormers.



## Farmhouse Elevation

All exterior elevations shown are artist's renderings and subject to change. Window sizes, styles, and locations may vary. Elevations may illustrate optional windows, dormers and/or other optional features. See sales consultant for specific facade details including siding, stone, stucco, and brick.



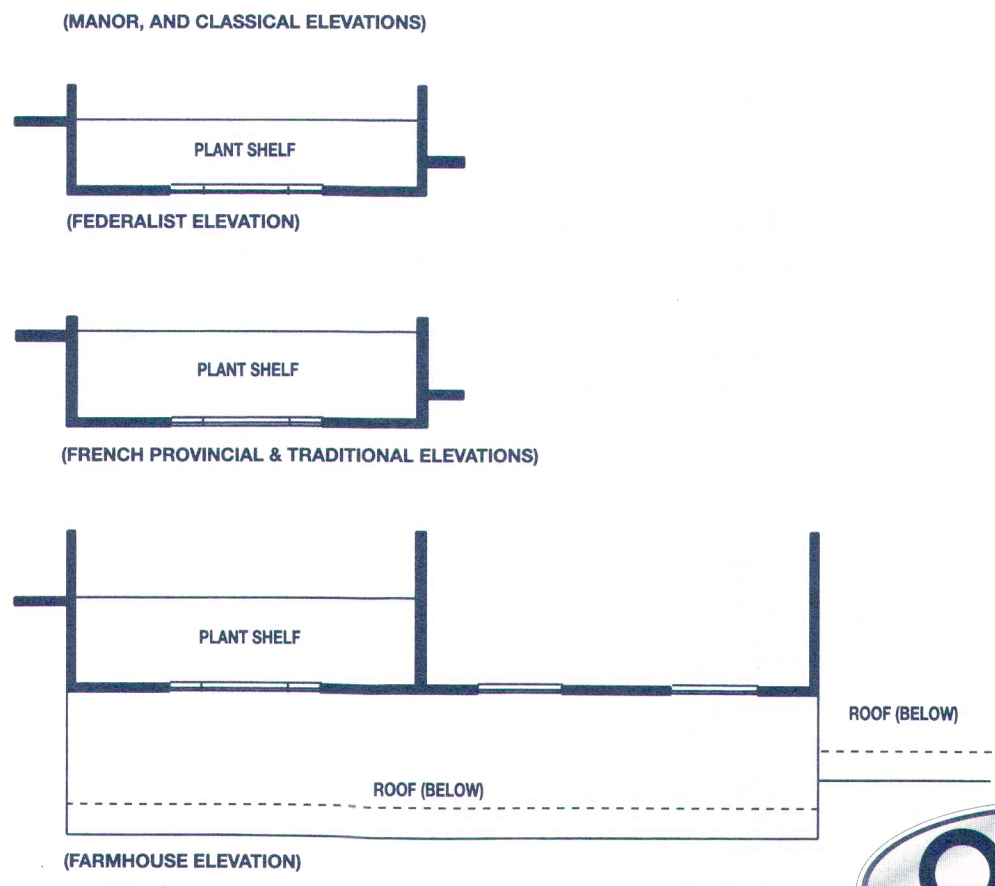
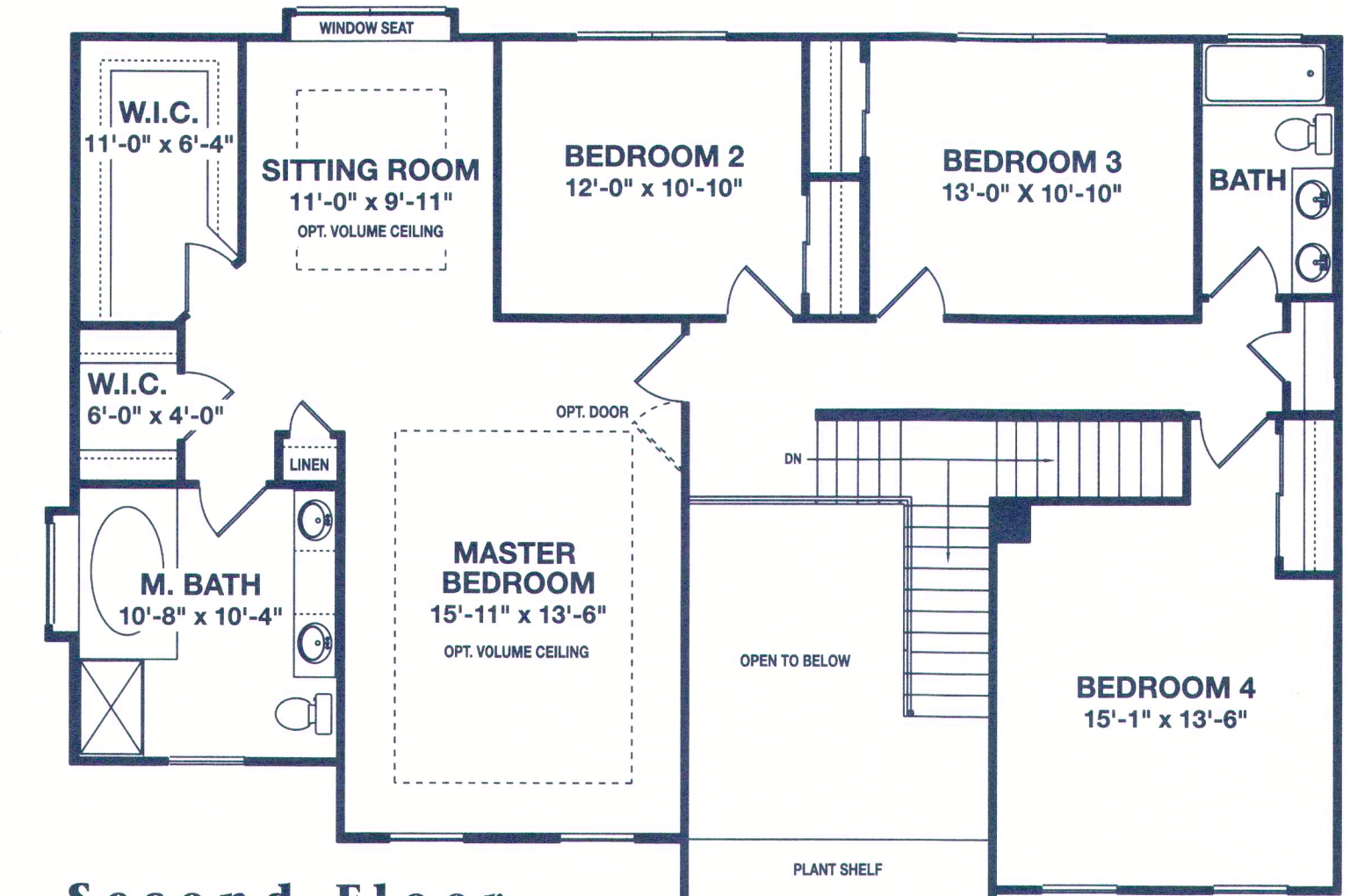
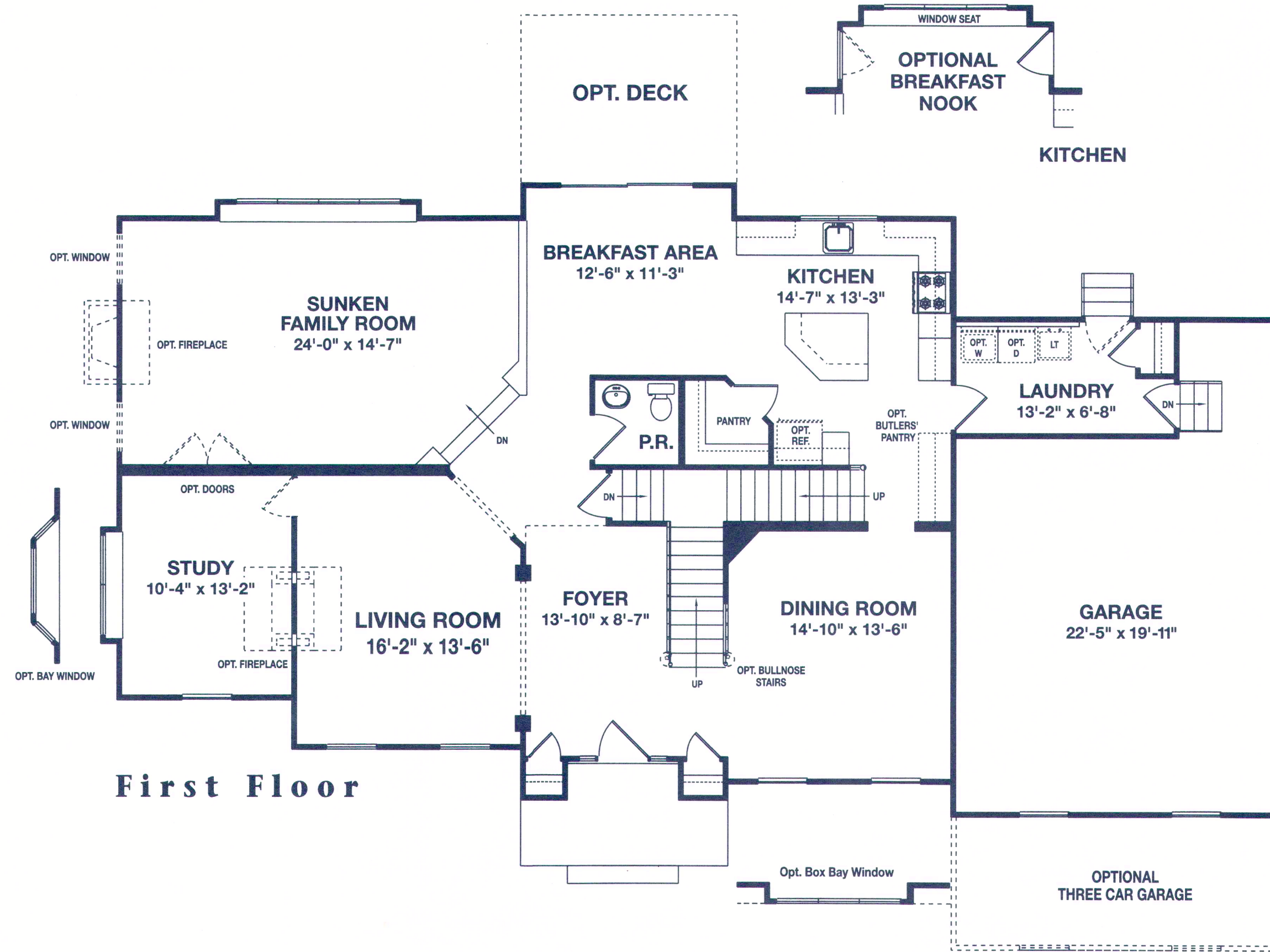
## Federalist Elevation



# The Winfield

A luxurious home of elegant design...

- 4 bedrooms, 2-1/2 baths
- Soaring two-story foyer
- Private first floor study
- Large sunken family room with optional fireplace
- Centrally located kitchen with center island, breakfast area, and walk-in pantry
- Spacious master bedroom featuring enormous walk-in closet, sitting room, and master bath with separate tub and shower and dual vanities
- Two car garage



Floor plans and dimensions are approximate and subject to change without notice. Floor plans may illustrate optional features. Window locations and styles vary according to elevation. Please see sales consultant for basement detail. (Where basements are optional, see sales consultant for alternate first floor plan.)

