

The Ashford



The Ashford Traditional



The Ashford Grand



The Ashford Federal

There are many appealing reasons to move up to the Ashford. Space! Drama! Custom class features! Distinctive styling! It all begins in the impressive two story foyer with a grand staircase and balcony overlook. A private study is another welcome addition. Most move up buyers long for larger living and dining rooms. The Ashford provides these in grand style. Other first floor bonuses are 9' ceilings, spacious kitchen with island counter and a huge family room featuring a soaring two story ceiling. Highlighting the second floor is a grand bedroom suite including double door entrance, an immense closet and a lavish, private bath with double bowl sink and garden tub. Count up the reasons and you'll be convinced. The Ashford has everything you want in a move up residence.

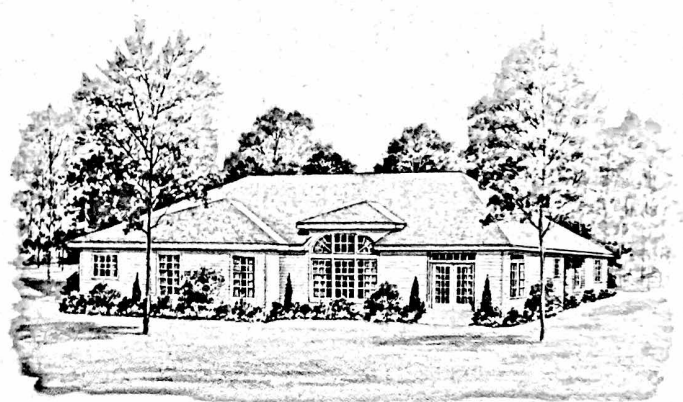
The Avignon



The Avignon Provincial



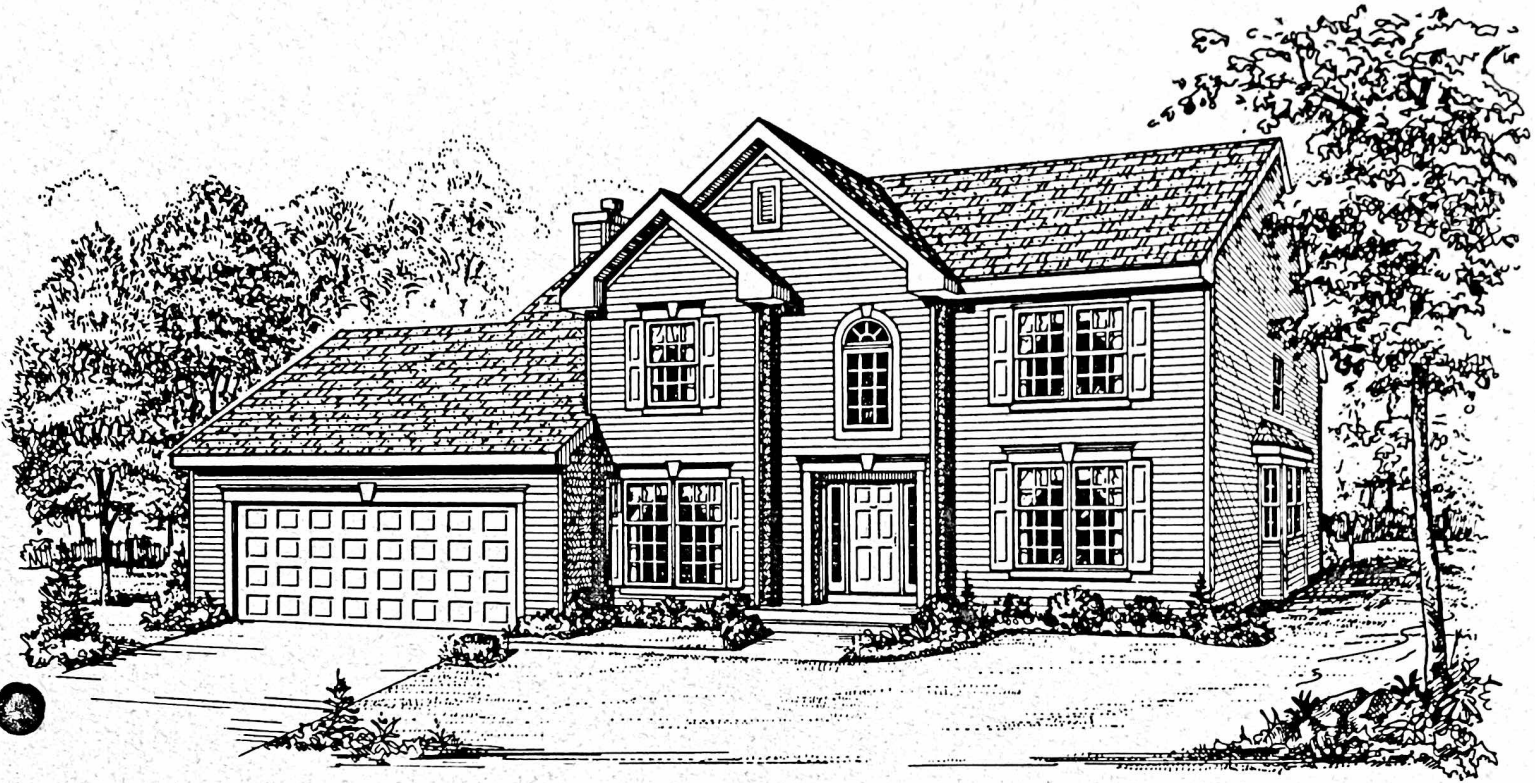
The Avignon Traditional



The back view of the Avignon
(showing the triple/transom window combination in the family room)

This impressive residence affords you all the comfort and luxury of a two story home in a step-saving and convenient one level design. Avignon's elegance begins in the grand, towering foyer. The adjoining dining and living rooms are beautifully window-scaped creating a dramatic open area for entertaining. Equally captivating are the spacious master suite and the expansive family room with its soaring ceiling and custom styled triple/transom window combination (see rear elevation). The Avignon is available in two magnificent styles - provincial and traditional.

The St. Regis



The St. Regis Traditional



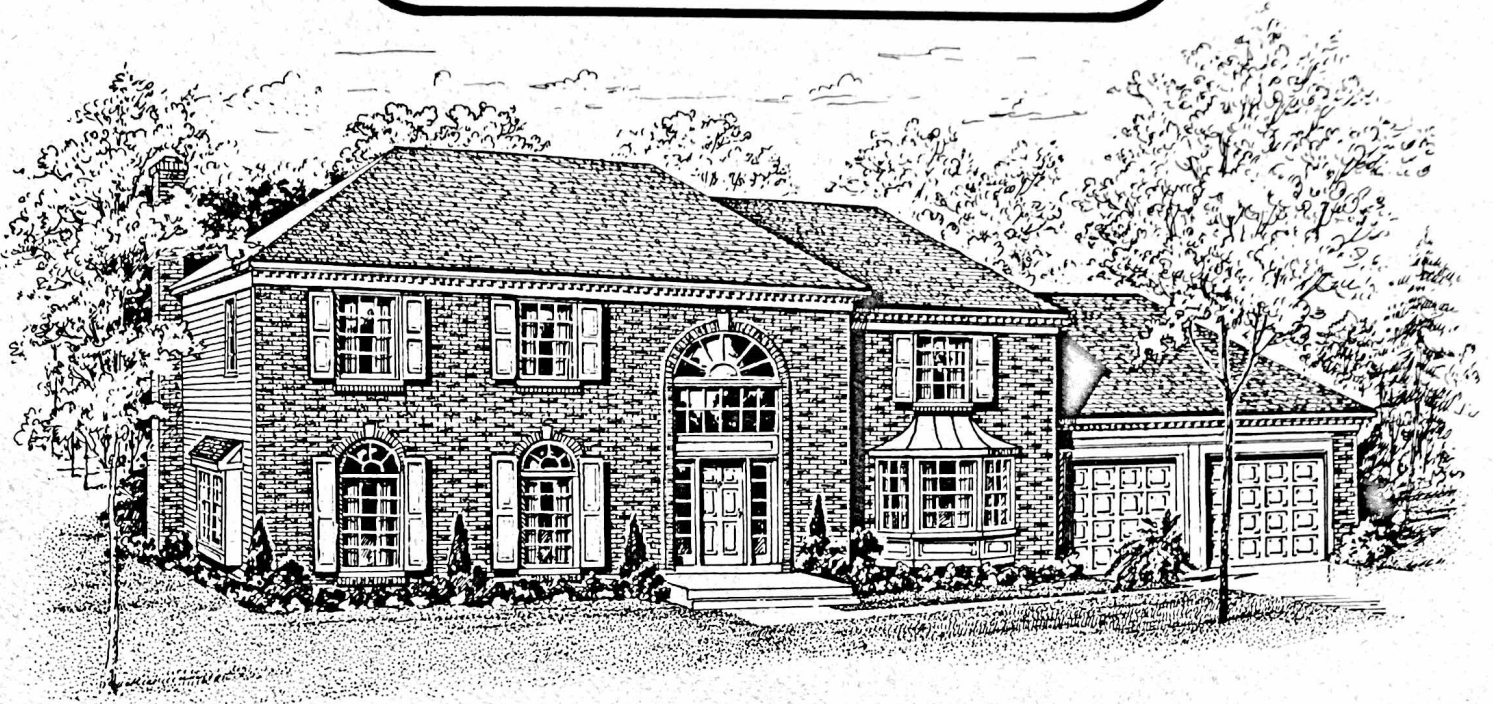
The St. Regis Provincial

This distinguished, striking residence features a multitude of virtues . . . all designed to bring excitement, drama, elegance and value to daily living.

How is this accomplished? In a word it's Papparone . . . *it's the inspiration* to create an impressive two story foyer with balcony . . . *it's the experience* to know that today's families want a huge country kitchen with peninsula breakfast bar . . . *it's the craftsmanship* to turn a functional family room into a luxurious playground for fulfilling entertainment . . . *it's the price* that includes so many extras.

It all culminates in this grand new home style entitled the St. Regis!

The Crofton



The Crofton Traditional



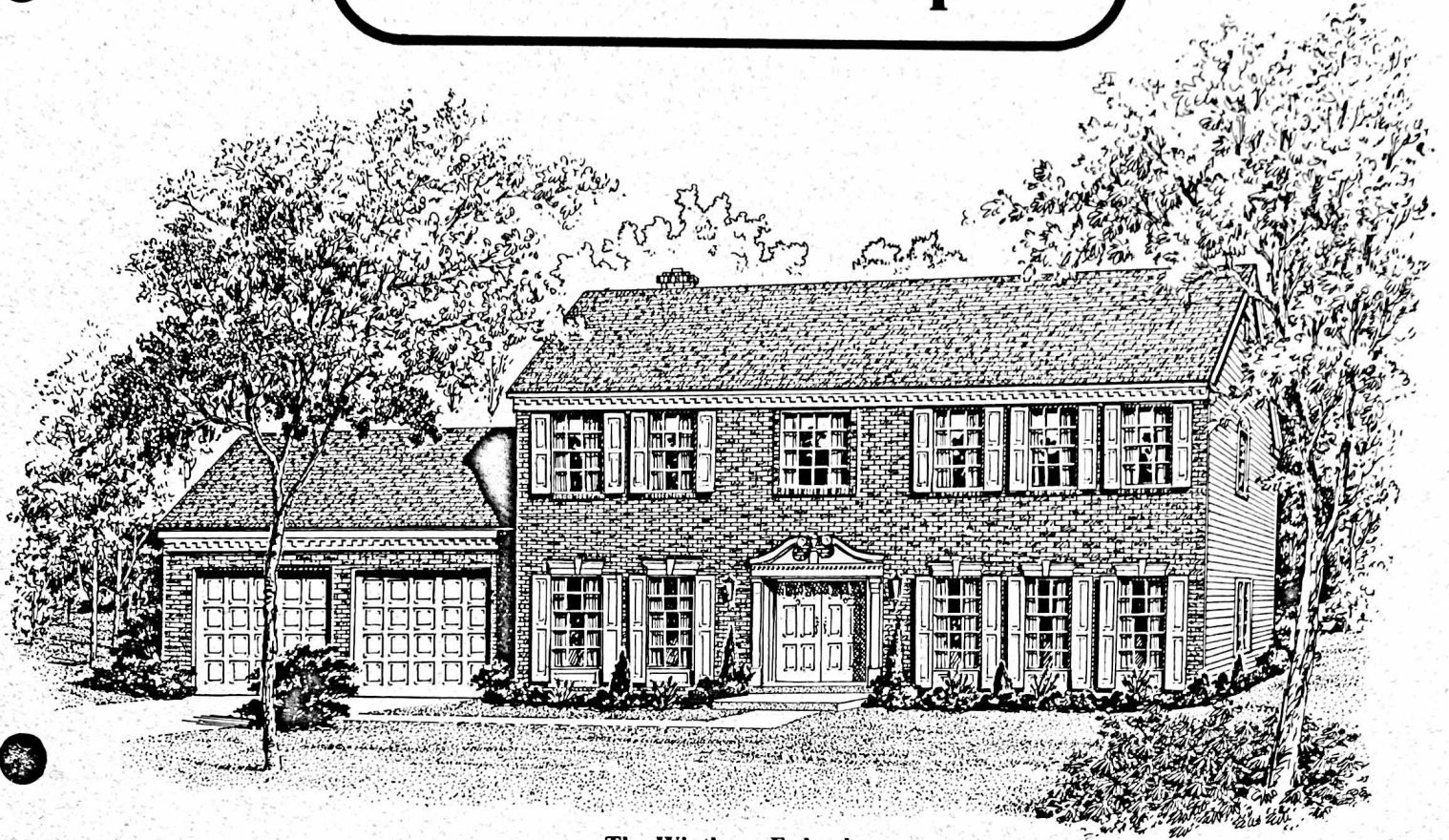
The Crofton Colonial



The Crofton Provincial

Beyond the dramatic entrance, past the stately living and dining rooms, lies the heart of this distinctive home where family and friends will gather for daily activities and relaxation. The breakfast area and the kitchen flow directly into the family room which creates the feeling of one continuous space. An optional fireplace is offered. Upstairs, the incredible master bedroom suite showcases a huge walk-in closet and a spacious master bath including a soaking tub. An added bonus to the Crofton's second floor is a dramatic study that overlooks the soaring entry foyer. This exceptional Crofton residence offers three impressive exterior designs and a host of endless amenities. It must be seen to be believed.

The Winthrop



The Winthrop Federal



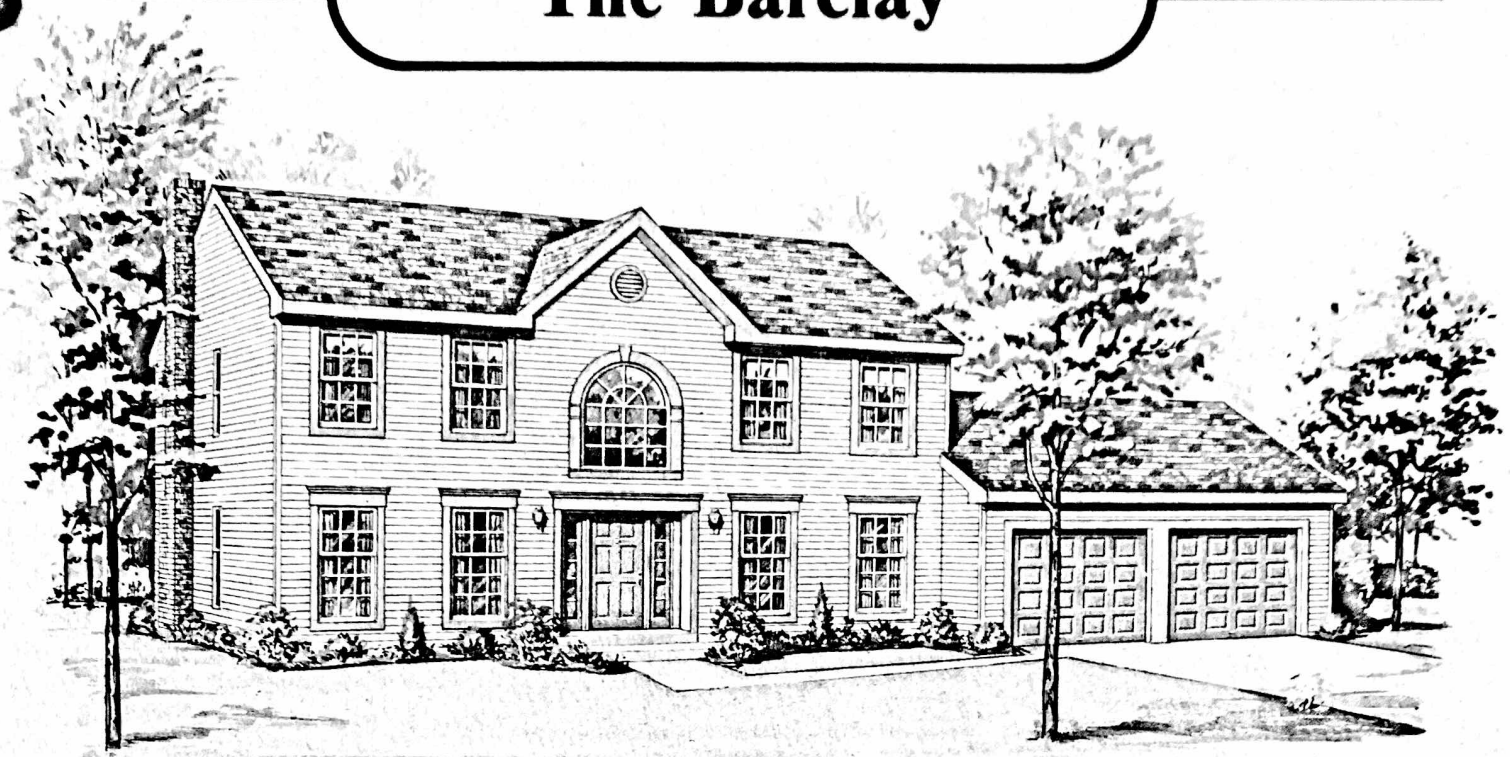
The Winthrop Grand



The Winthrop Traditional

The Winthrop, reminiscent of stately Early American homes, lends grace to its dramatic interior, beginning with the entrance. Use of nine foot ceilings and unique window design and placement enhances the home's inviting nature. Formal oversized living and dining rooms are designed for maximum entertaining comfort and convenience. An expansive kitchen, including center island and breakfast nook, is enhanced by optional skylights. A three car, side entry garage is optional. Four superb bedrooms are located upstairs. The design is distinguished by a master suite featuring a cathedral ceiling, unique curved walls and master bath with a platform tub. The Winthrop's luxurious details create a captivating world of elegance waiting to be explored.

The Barclay



The Barclay Traditional



The Barclay Farmhouse



The Barclay Federal

The Barclay creates a home which is both stately and comfortable. Traditional touches are artistically blended with upscale design. The result is a first floor plan which easily lends itself to both entertaining and family gatherings. Formal living and dining rooms, flanking the two story foyer, achieve a sense of balance. A spacious family room, with optional fireplace, opens into the kitchen for ideal serving convenience. A center island kitchen, highlighted by an expansive breakfast area, is bathed in natural sunlight from a 9' sliding door. On the second floor, the stunning master suite includes a private bath featuring a picture window above a garden tub. Three more oversized bedrooms, along with a second bath, complete the plan in this family home with an elegant feel and touch of luxury.

The Oxford



The Oxford Provincial



The Oxford Traditional



The Oxford Georgian

A signature feature of this captivating Oxford design is its towering front entry. Transom and radial windows rise above the door creating stately elegance in each of three magnificent exterior designs ... and this is just the beginning! An impressive two story foyer leads into the Oxford's sensational showpiece ... a magnificent, soaring family room dressed with transom windows. To the left is a private den or study featuring a formal double door entrance. Also adjoining the family room is the country-sized, center island kitchen with breakfast nook and convenient back staircase. A handy butler's pantry, with plentiful cabinets, is just one of many popular kitchen amenities. Equally sumptuous is the spectacular master suite featuring a volume ceiling and private bath including soaking tub. Three additional bedrooms are exceptionally spacious and include abundant closet space.

The Stoneleigh



The Stoneleigh Traditional



The Stoneleigh Provincial



The Stoneleigh Georgian

The Stoneleigh is the perfect enticement to move up to an exceptional residence. It offers a choice of three stately exterior styles each creating impressive curbside appeal. Inside is a radical departure from conventional plans featuring custom styling rotated curiously on an angle, presenting excitement at every turn including nine foot ceilings. Among the most popular features are the dramatic family room with vaulted ceiling, the expansive kitchen with center island, a rear staircase, the private den and a magnificent master suite and bath.

The Normandy



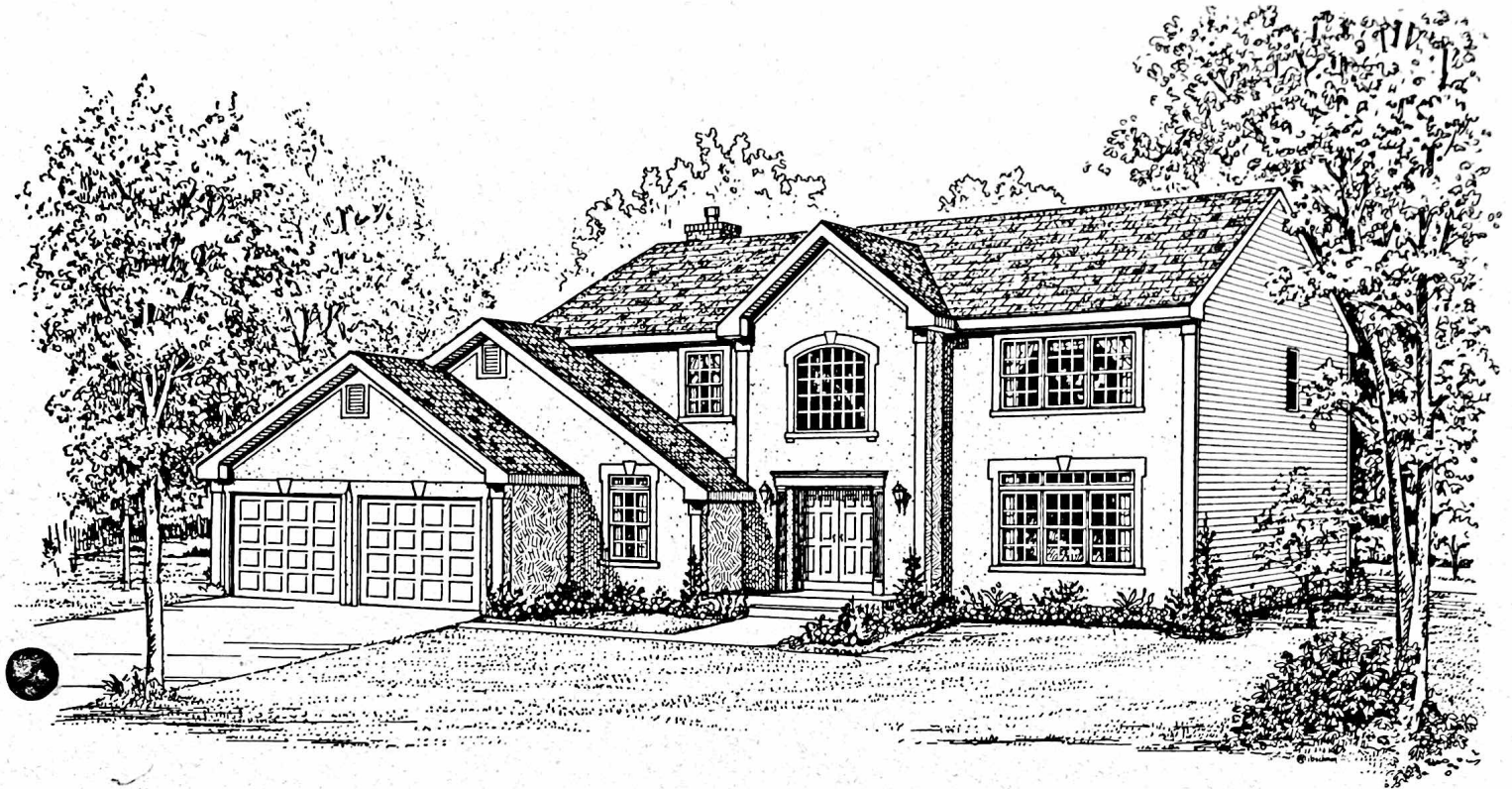
The Normandy



The Normandy Provincial

Drama and luxury highlight the European styled Normandy. Step inside the two story foyer and you'll be impressed by the openness, accented by the circular oak staircase and balcony. The formal living room leads to an elegant dining room enhanced by an angled bay window. Drawing your attention to the sunken family room are sliding glass doors to the patio, circle top windows and an optional fireplace. A large, sunny kitchen features a center island, breakfast nook and bay window. Upstairs, the luxurious master suite includes a vaulted ceiling and room sized closet. Come realize your dreams in the Normandy.

The Livingston



The Livingston embodies the ultimate in refined elegance! It all begins with the stately, stucco exterior which sets the tone for the luxury inside.

Enter into a magnificent, two story foyer graced with a turned staircase leading to a second floor balcony overlook. Off to the side are separate living and dining rooms that are ideally suited for festive, formal entertaining.

For quiet moments there is the library retreat. Other highlights of the expansive first floor are the sunken family room and a beautifully appointed kitchen with breakfast nook.

Upstairs are four sumptuous bedrooms including an extravagant master retreat with a lavish, private bath.

There is one word that best exemplifies this exciting Livingston model . . . breathtaking!