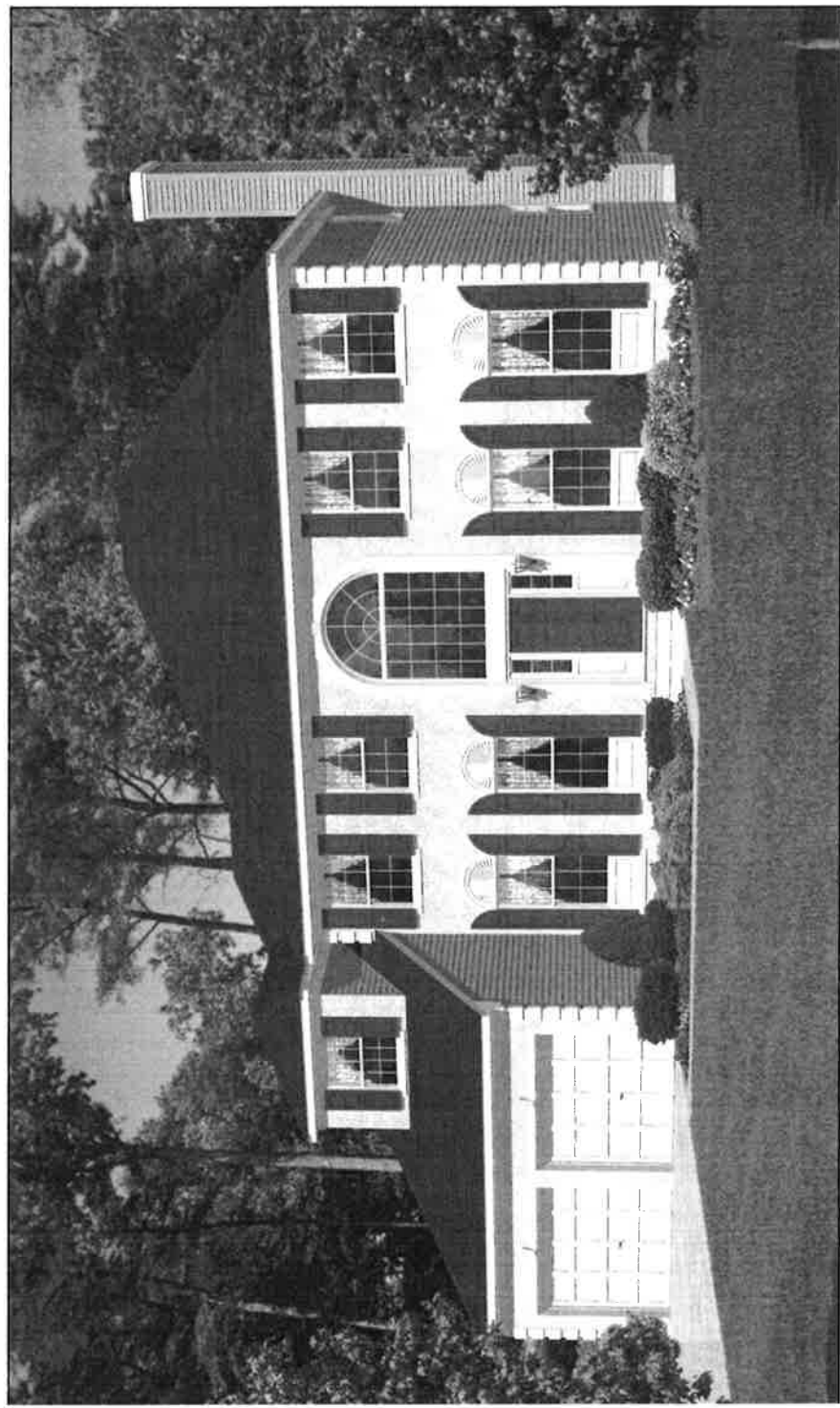




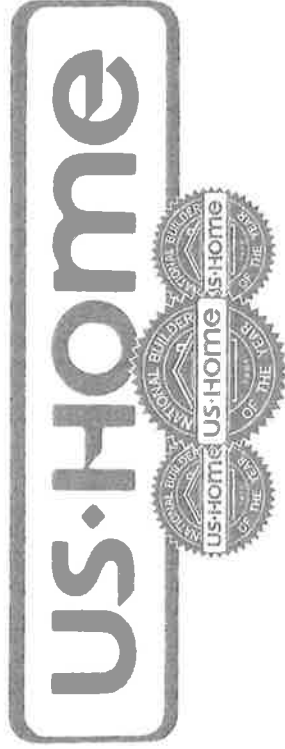
# STRATFORD III

*Signature Series*



Stratford III - Elevation A

Artist's Rendering

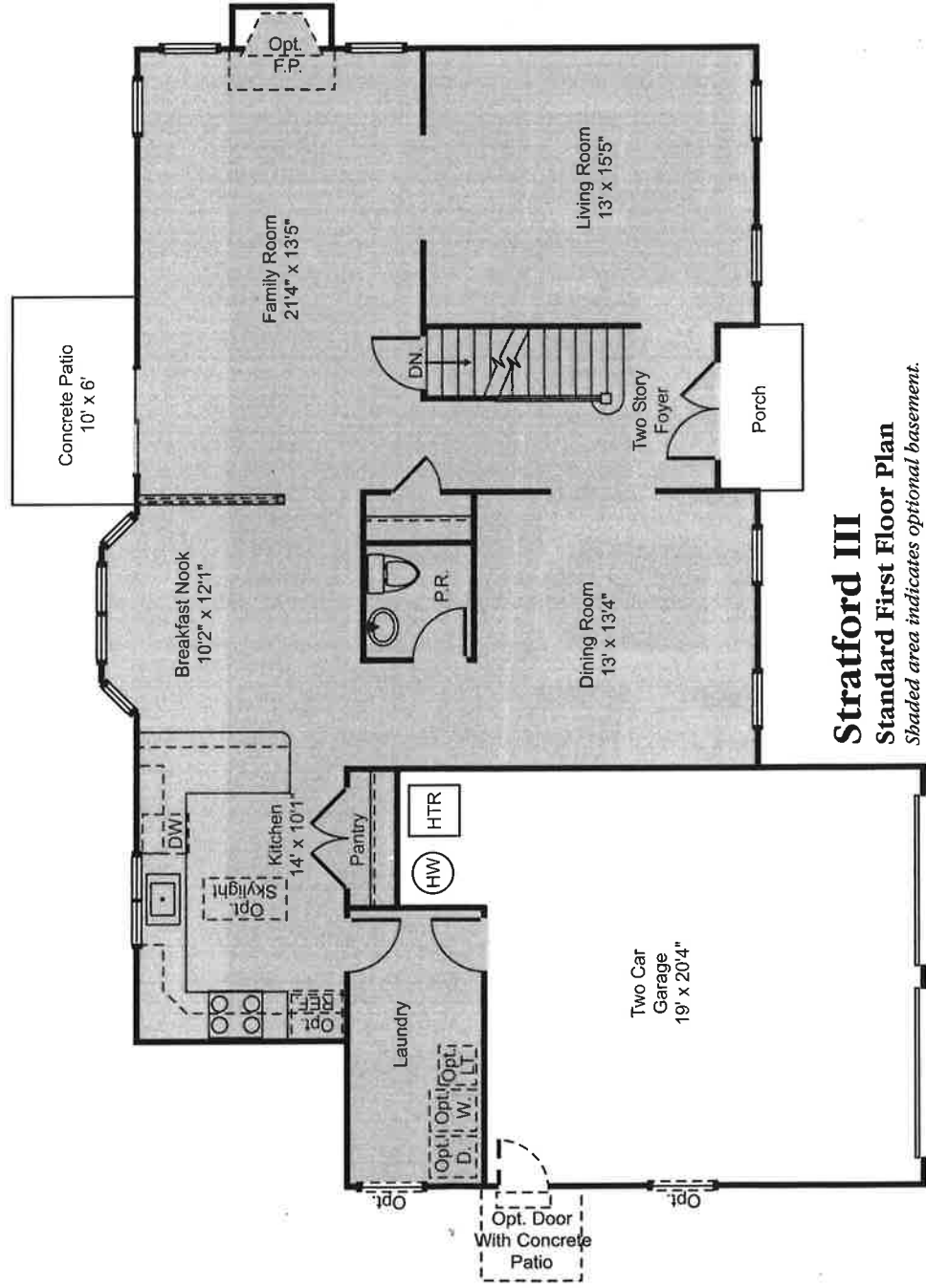


*Three Time National Winner  
Builder of the Year!*





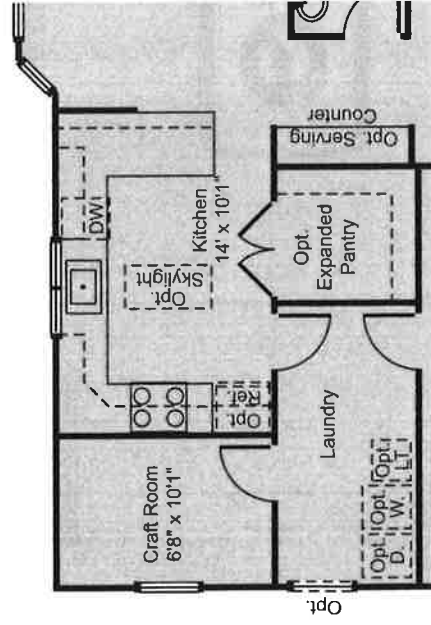
# STRATFORD III



## Stratford III

### Standard First Floor Plan

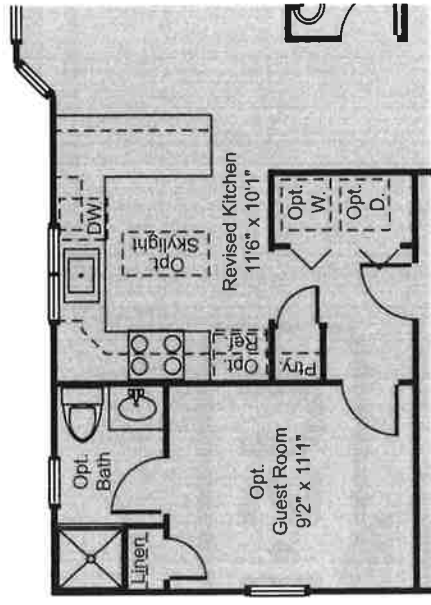
Shaded area indicates optional basement.



## Stratford III

### Partial First Floor Plan

With Optional Craft Room



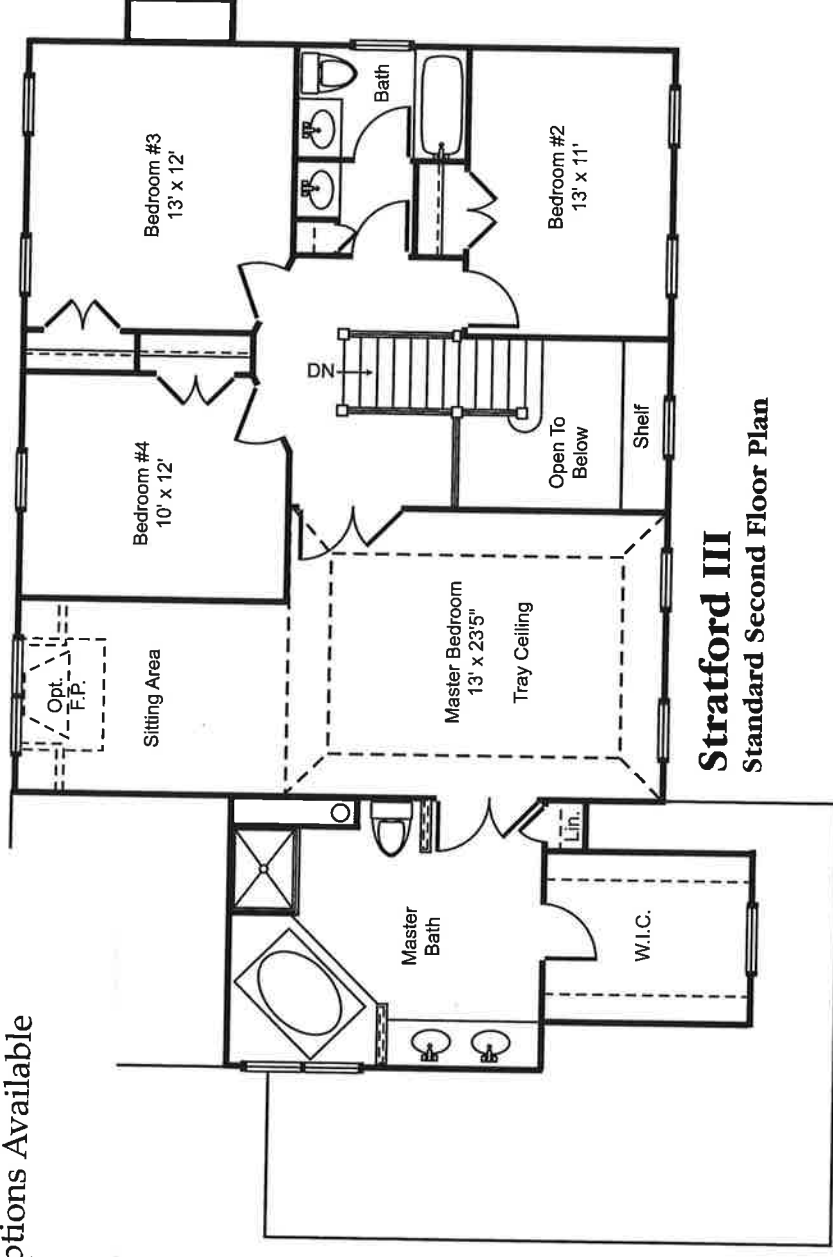
## Stratford III

### Partial First Floor Plan

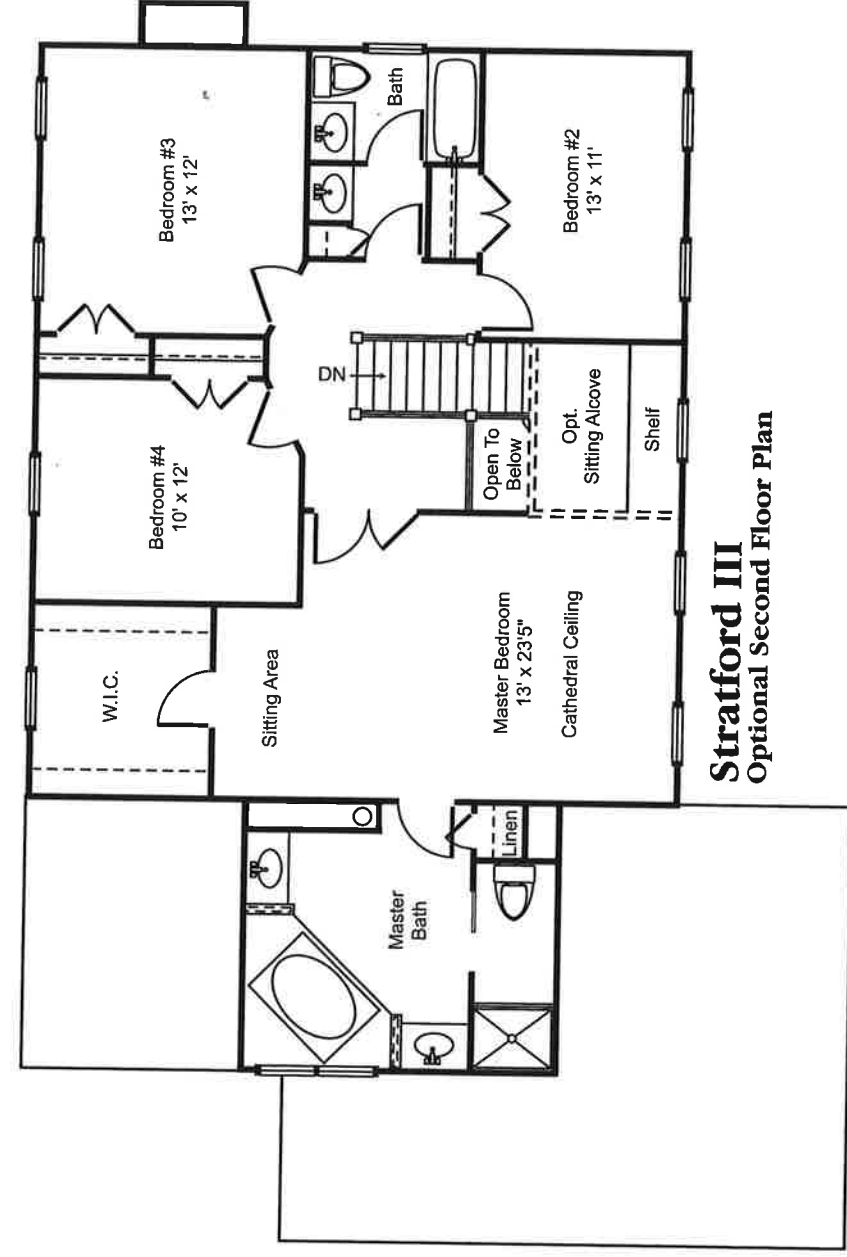
With Optional Guest Room



2 Story Entry Foyer  
 Gourmet Kitchen with Peninsula Island Cabinetry  
 4 Bedrooms  
 2-1/2 Baths  
 Spacious Master Suite with Separate Sitting Area  
 2 Car Garage  
 Personalizing Options Available

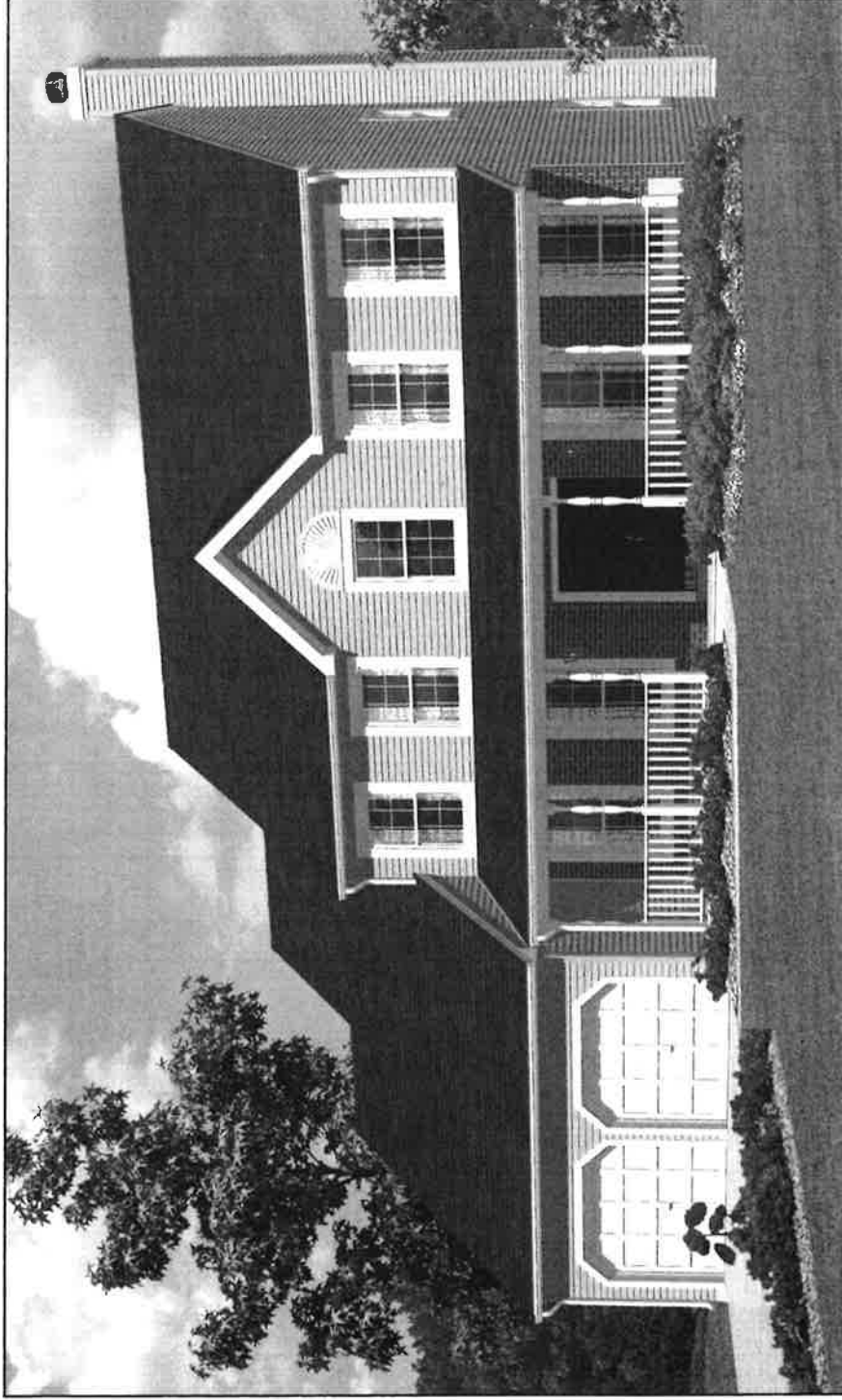


**Stratford III**  
 Standard Second Floor Plan



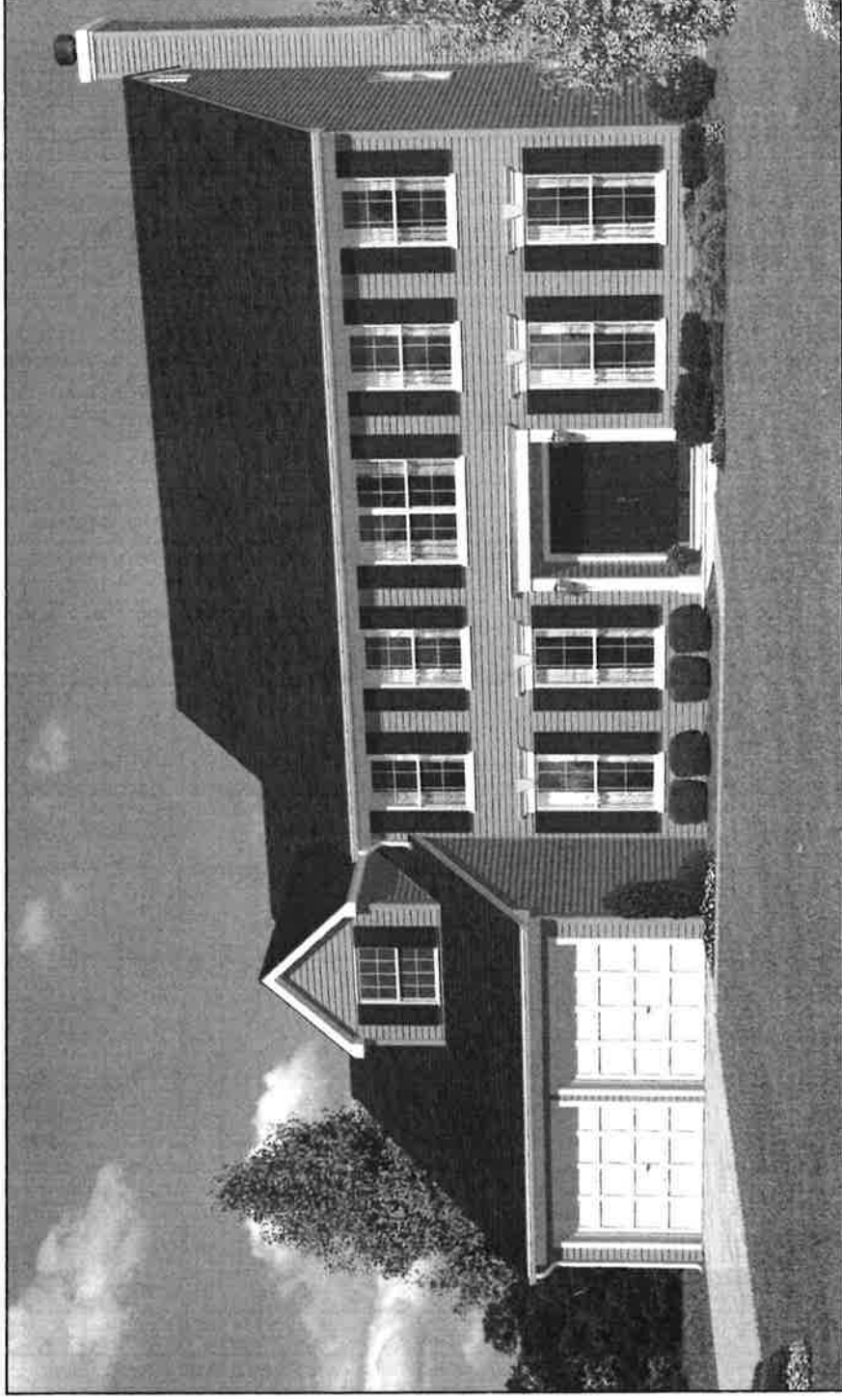
**Stratford III**  
 Optional Second Floor Plan

All dimensions are approximate and subject to field variations and changes. Information herein, subject to errors and omissions. See sales representative for details. Elevation renderings and interior may contain options which are not standard on all models. Please see sales representative for additional options available but not shown in this brochure. Options are not to scale.



*The Stratford III - Elevation B*

Artist's Re



*The Stratford III - Elevation C*

Artist's Re

